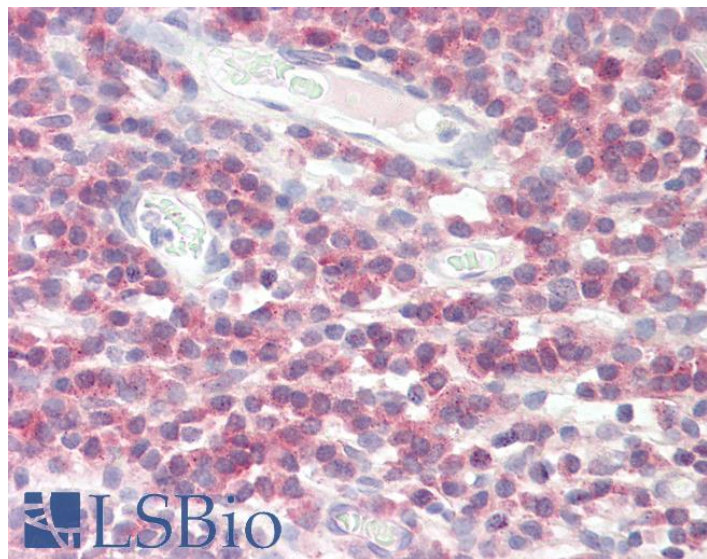


GOAT ANTI-DPM1 ANTIBODY

SKU: EB08942



SPECIFICATIONS

Formulation Supplied at 0.5 mg/ml in Tris saline, 0.02% sodium azide, pH7.3 with 0.5% bovine serum albumin.

Unit Size 100 µg

Storage Instructions Aliquot and store at -20°C. Minimize freezing and thawing.

Synonym / Alias Names dolichyl-phosphate mannosyltransferase polypeptide 1[dolichol monophosphate mannose synthase|MPDS|CDGIE|dolichyl-phosphate mannosyltransferase polypeptide 1, catalytic subunit|DPM1

Accession ID NP_003850.1

Blocking Peptide EBP08942

Immunogen Peptide with sequence RELEVRSPRQNKYS-C, from the N Terminus of the protein sequence according to NP_003850.1.

Peptide Sequence RELEVRSPRQNKYS-C

Purification Method Purified from goat serum by ammonium sulphate precipitation followed by antigen affinity chromatography using the immunizing peptide.

Shipping Instructions Refrigerated

Predicted Species	Human
Reactive Species	Human
Human Gene ID	8813
Product Grade	https://prod-vector-labs-pimcore-assets.s3.us-east-1.amazonaws.com/assets/products/image/elite_medium.png
IHC Results	Paraffin embedded Human Tonsil. Recommended concentration: 3.75µg/ml.
ELISA	
Detection Limit	Antibody detection limit dilution 1:32000.
Western Blot	Approx. 28kDa band observed in Human Liver lysates (calculated MW of 29.6kDa according to NP_003850.1). Recommended concentration: 0.1-0.3µg/ml. Primary incubation was 1 hour.
Application Type	Pep-ELISA, WB, IHC

DOCUMENTS

- [Data Sheet](#)

GALLERY IMAGES

