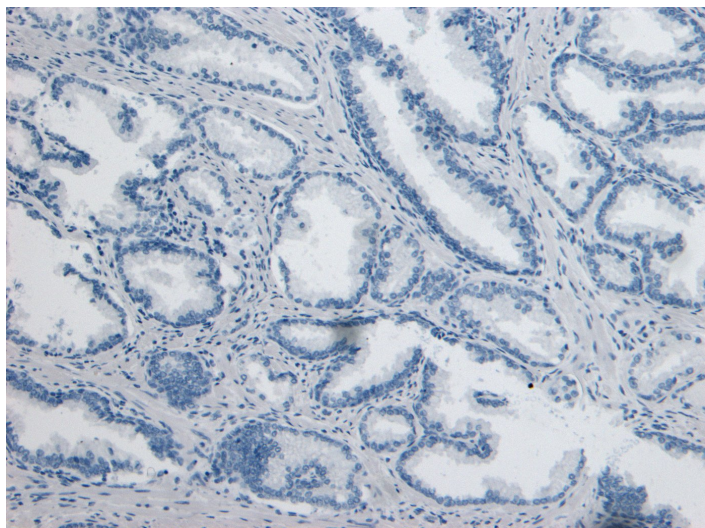


GOAT ANTI-DPP4 / CD26 ANTIBODY

SKU: EB07835



SPECIFICATIONS

Formulation Supplied at 0.5 mg/ml in Tris saline, 0.02% sodium azide, pH7.3 with 0.5% bovine serum albumin.

Unit Size 100 µg

Storage Instructions Aliquot and store at -20°C. Minimize freezing and thawing.

Synonym / Alias Names dipeptidylpeptidase IV (CD26, adenosine deaminase complexing protein 2)|dipeptidylpeptidase IV|dipeptidylpeptidase 4 (CD26, adenosine deaminase complexing protein 2)|adenosine deaminase complexing protein 2|T-cell activation antigen CD26|TP103|DPPIV|ADCP2|ADABP|dipeptidyl-peptidase 4 (CD26, adenosine deaminase complexing protein 2)|CD26|DPP4

Usage Summary

<p>Flow Cytometry: Flow cytometric analysis of HepG2 cells. Recommended concentration: 10ug/ml.</p>

Accession ID NP_001926.2

Blocking Peptide EBP07835

Immunogen Peptide with sequence C-PPHFDKSKKYP, from the internal region of the protein sequence according to NP_001926.2.

Peptide Sequence C-PPHFDKSKKYP

Purification Method Purified from goat serum by ammonium sulphate precipitation followed by antigen affinity chromatography using the immunizing peptide.

Shipping Instructions	Refrigerated
Predicted Species	Human, Mouse, Rat
Reactive Species	Human
Human Gene ID	1803
Mouse Gene ID	13482
Rat Gene ID	25253
Product Grade	https://prod-vector-labs-pimcore-assets.s3.us-east-1.amazonaws.com/assets/products/image/elite_medium.png
IHC Results	Paraffin embedded Human Prostate. Recommended concentration: 8µg/ml.
ELISA	
Detection Limit	Antibody detection limit dilution 1:64000.
Application Type	Pep-ELISA, IHC, FC

DOCUMENTS

- [Data Sheet](#)

GALLERY IMAGES

