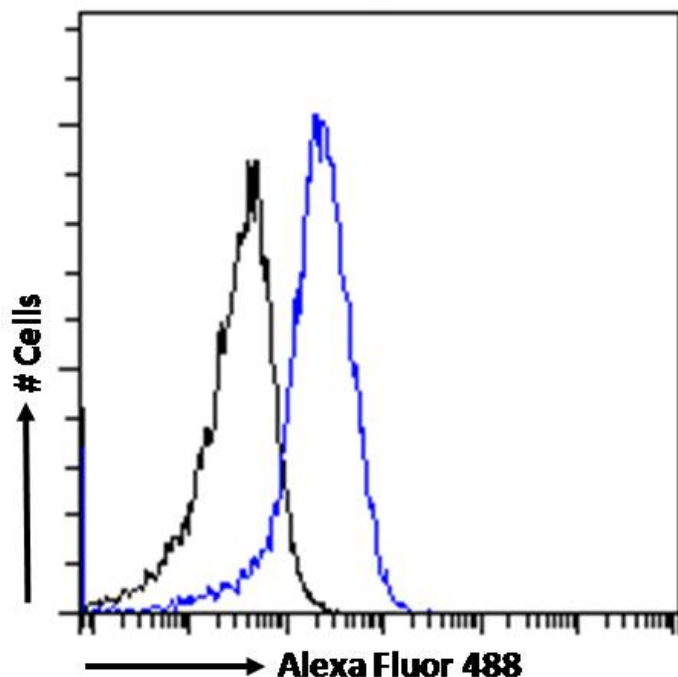


GOAT ANTI-DRD5 ANTIBODY

SKU: EB07424



SPECIFICATIONS

Formulation Supplied at 0.5 mg/ml in Tris saline, 0.02% sodium azide, pH7.3 with 0.5% bovine serum albumin.

Unit Size 100 µg

Storage Instructions Aliquot and store at -20°C. Minimize freezing and thawing.

Synonym / Alias Names dopamine receptor D1B|D1beta dopamine receptor|MGC10601|DRD1L2|DRD1B|DBDR|dopamine receptor D5|DRD5

Usage Summary **Immunofluorescence:** Strong expression of the protein seen in the cytoplasm and plasma membranes of U251 and HeLa cells. Recommended concentration: 10µg/ml. **Flow Cytometry:** Flow cytometric analysis of U251 cells. Recommended concentration: 10ug/ml.

Accession ID NP_000789.1

Blocking Peptide EBP07424

Immunogen	Peptide with sequence C-NREVDNDEEEGPFD, from the internal region of the protein sequence according to NP_000789.1.
Peptide Sequence	C-NREVDNDEEEGPFD
Purification Method	Purified from goat serum by ammonium sulphate precipitation followed by antigen affinity chromatography using the immunizing peptide.
Shipping Instructions	Refrigerated
Predicted Species	Human
Reactive Species	Human
Human Gene ID	1816
Product Grade	https://prod-vector-labs-pimcore-assets.s3.us-east-1.amazonaws.com/assets/products/image/elite_medium.png
ELISA Detection Limit	Antibody detection limit dilution 1:128000.
Western Blot	Preliminary testing showed a band at approx 55kDa in Caco-2 and U2OS cell lysate after 1-2µg/ml antibody staining (calculated MW of 53.0kDa according to NP_000789.1). Primary incubation 1 hour at room temperature.
Application Type	Pep-ELISA, IF, FC

DOCUMENTS

- [Data Sheet](#)

GALLERY IMAGES

