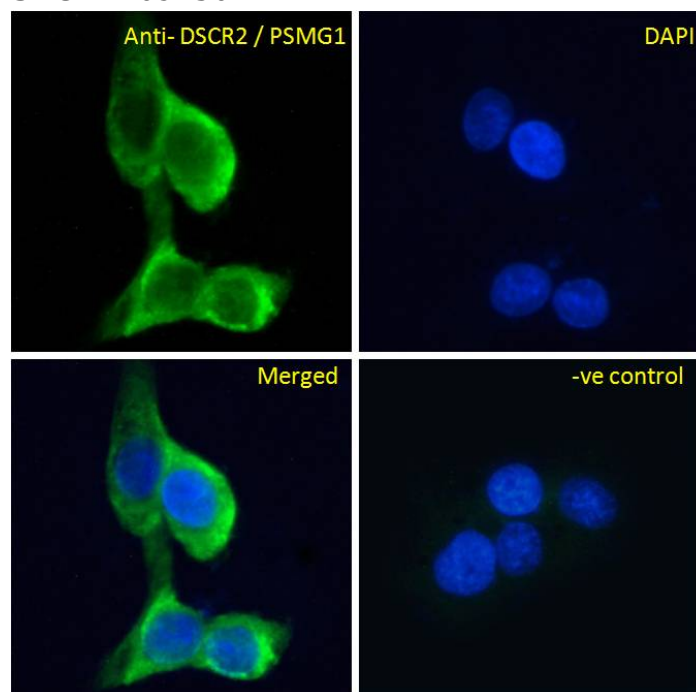


GOAT ANTI-DSCR2 / PSMG1 ANTIBODY

SKU: EB09150



SPECIFICATIONS

Formulation Supplied at 0.5 mg/ml in Tris saline, 0.02% sodium azide, pH7.3 with 0.5% bovine serum albumin.

Unit Size 100 µg

Storage Aliquot and store at -20°C. Minimize freezing and thawing.

Synonym / Alias proteasome assembling chaperone 1|leucine rich protein C21-LRP|chromosome 21 leucine-rich protein|Down syndrome critical region protein 2|Down syndrome critical region gene

Names 2|PAC1|LRPC21|DSCR2|C21LRP|proteasome (prosome, macropain) assembly chaperone 1|PSMG1

Usage Summary **Immunofluorescence:** Strong expression of the protein seen in the cytoplasm and Golgi apparatus of A431 and U2OS cells. Recommended concentration: 10µg/ml. **Flow Cytometry:** Flow cytometric analysis of Jurkat cells. Recommended concentration: 10ug/ml.

Accession ID NP_003711.1; NP_982257.1; NP_001248753.1; NP_001307724.1

Blocking Peptide EBP09150

Immunogen	Peptide with sequence C-KLMTTNEIQSNIYT, from the C Terminus of the protein sequence according to NP_003711.1; NP_982257.1; NP_001248753.1; NP_001307724.1.
Product	This antibody is expected to recognize all reported isoforms (NP_003711.1; NP_982257.1; NP_001248753.1; NP_001307724.1)
Peptide Sequence	C-KLMTTNEIQSNIYT
Purification Method	Purified from goat serum by ammonium sulphate precipitation followed by antigen affinity chromatography using the immunizing peptide.
Shipping Instructions	Refrigerated
Predicted Species	Human, Mouse, Rat, Dog, Cow
Reactive Species	Human
Human Gene ID	8624
Mouse Gene ID	56088
Rat Gene ID	288236
Product Grade	https://prod-vector-labs-pimcore-assets.s3.us-east-1.amazonaws.com/assets/products/image/elite_medium.png
ELISA Detection Limit	Antibody detection limit dilution 1:64000.
Application Type	Pep-ELISA, IF, FC

DOCUMENTS

- [Data Sheet](#)

GALLERY IMAGES

