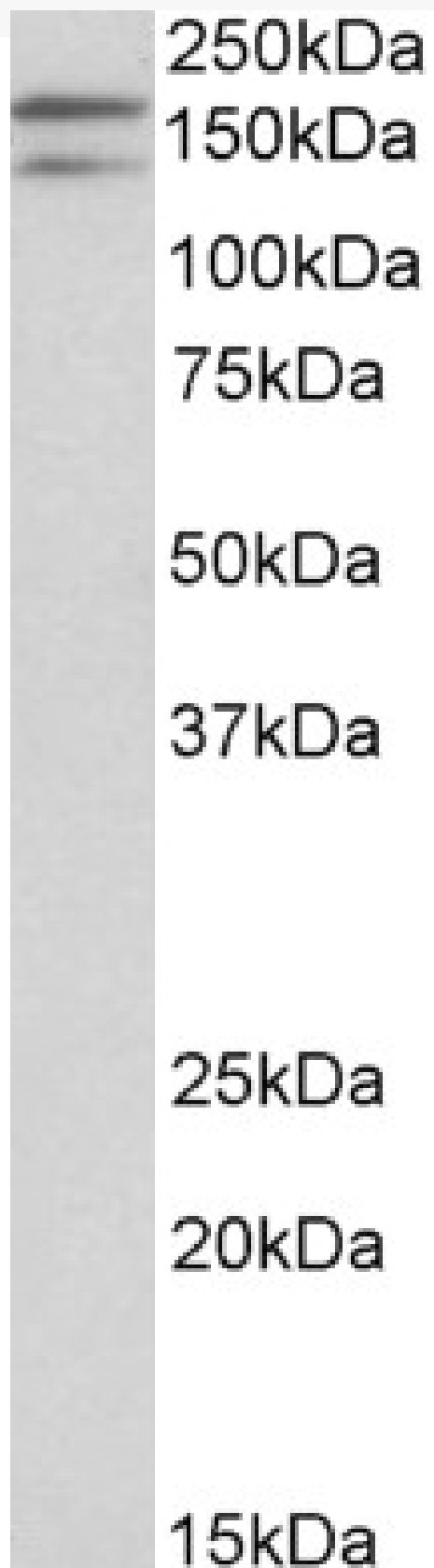


GOAT ANTI-DUOX1 (AA972-985) ANTIBODY

SKU: EB11090



SPECIFICATIONS

Formulation	Supplied at 0.5 mg/ml in Tris saline, 0.02% sodium azide, pH7.3 with 0.5% bovine serum albumin.
Unit Size	100 µg
Storage Instructions	Aliquot and store at -20°C. Minimize freezing and thawing.
Synonym / Alias Names	DUOX1 thyroid oxidase 1 THOX1 NOXEF1 nicotinamide adenine dinucleotide phosphate oxidase NADPH thyroid oxidase 1 MGC138841 MGC138840 long NOX 1 LNOX1 large NOX 1 flavoprotein NADPH oxidase dual oxidase 1
Accession ID	NP_059130.2
Blocking Peptide	EBP11090
Immunogen	Peptide with sequence CSRSDIETELTPQR, from the internal region of the protein sequence according to NP_059130.2.
Product Comments	Reported variants represent identical protein: NP_787954.1, NP_059130.2. This antibody is not expected to cross-react with DUOX2.
Peptide Sequence	CSRSDIETELTPQR
Purification Method	Purified from goat serum by ammonium sulphate precipitation followed by antigen affinity chromatography using the immunizing peptide.
Shipping Instructions	Refrigerated
Predicted Species	Human
Reactive Species	Human
Human Gene ID	53905
Product Grade	https://prod-vector-labs-pimcore-assets.s3.us-east-1.amazonaws.com/assets/products/image/elite_medium.png
ELISA Detection Limit	Antibody detection limit dilution 1:128000.
Western Blot	Approx 170kDa band observed in Human Testis lysates (calculated MW of 177kDa according to NP_059130.2). Recommended concentration: 0.1-0.3µg/ml. Primary incubation was 1 hour. An additional band of unknown identity was also consistently observed at 140kDa. This band was successfully blocked by incubation with the immunizing peptide.
Application Type	Pep-ELISA, WB

DOCUMENTS

- [Data Sheet](#)

GALLERY IMAGES

