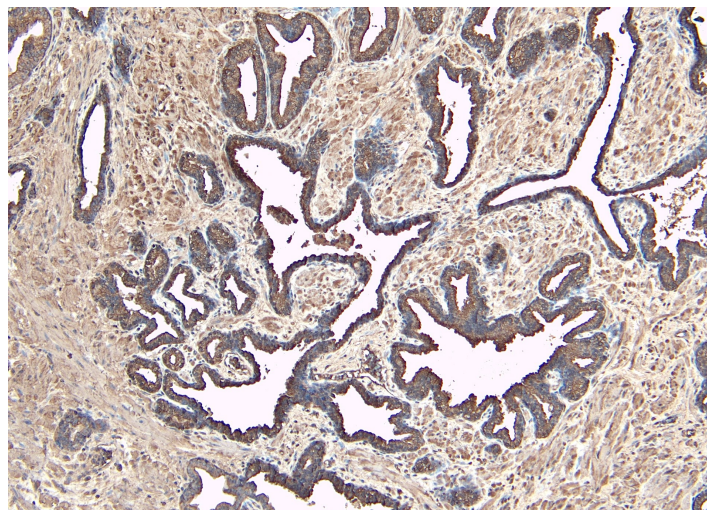


GOAT ANTI-DUSP1 ANTIBODY

SKU: EB05197



SPECIFICATIONS

Formulation Supplied at 0.5 mg/ml in Tris saline, 0.02% sodium azide, pH7.3 with 0.5% bovine serum albumin.

Unit Size 100 µg

Storage Instructions Aliquot and store at -20°C. Minimize freezing and thawing.

Synonym / Alias Names MKP1|serine/threonine specific protein phosphatase|PTPN10|MKP-1|CL100|HWH1|dual specificity phosphatase 1|DUSP1

Accession ID NP_004408.1

Blocking Peptide EBP05197

Immunogen Peptide with sequence SYLQSPITTSPSC, from the C Terminus of the protein sequence according to NP_004408.1.

Peptide Sequence SYLQSPITTSPSC

Purification Method Purified from goat serum by ammonium sulphate precipitation followed by antigen affinity chromatography using the immunizing peptide.

Shipping Instructions Refrigerated

Predicted Species Human, Dog, Cow, Mouse, Rat

Reactive Species	Human
Human Gene ID	1843
Mouse Gene ID	19252
Product Grade	https://prod-vector-labs-pimcore-assets.s3.us-east-1.amazonaws.com/assets/products/image/elite_medium.png
IHC Results	Paraffin embedded Human Prostate. Recommended concentration: 8µg/ml.
ELISA Detection Limit	Antibody detection limit dilution 1:64000.
Western Blot	Approx 40kDa band observed in lysates of HeLa (calculated MW of 39.3kDa according to NP_004408.1). Recommended concentration: 1-3µg/ml. Primary incubation was 1 hour. Preliminary testing was unsuccessful on Rat Lung for this particular batch.
Application Type	Pep-ELISA, WB, IHC

DOCUMENTS

- [Data Sheet](#)

GALLERY IMAGES

