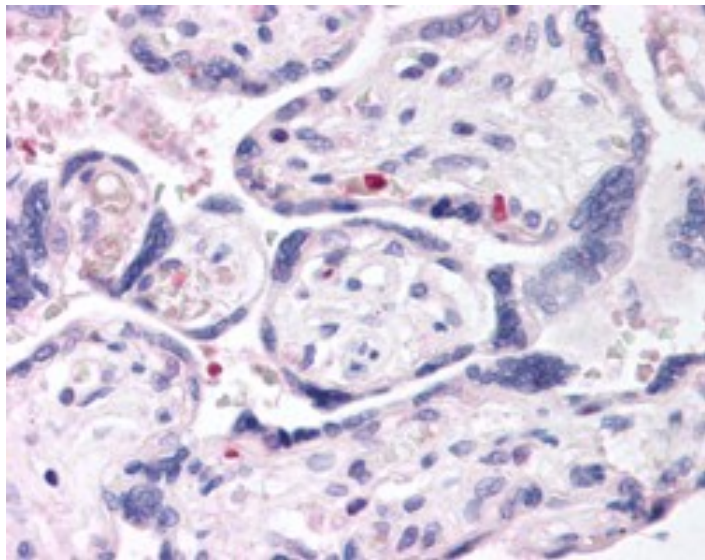


GOAT ANTI-DUSP16 ANTIBODY

SKU: EB05236



SPECIFICATIONS

Formulation Supplied at 0.5 mg/ml in Tris saline, 0.02% sodium azide, pH7.3 with 0.5% bovine serum albumin.

Unit Size 100 µg

Storage Instructions Aliquot and store at -20°C. Minimize freezing and thawing.

Synonym /

Alias Names MGC129702|MGC129701|MAPK phosphatase-7|KIAA1700|MKP-7|MKP7|dual specificity phosphatase 16|DUSP16

Accession ID NP_085143.1

Blocking Peptide EBP05236

Immunogen Peptide with sequence AHEMIGTQIVTER-C, from the N Terminus of the protein sequence according to NP_085143.1.

Peptide Sequence AHEMIGTQIVTER-C

Purification Method Purified from goat serum by ammonium sulphate precipitation followed by antigen affinity chromatography using the immunizing peptide.

Shipping Instructions Refrigerated

Predicted Species	Human, Mouse, Rat, Dog, Cow
Reactive Species	Human
Human Gene ID	80824
Mouse Gene ID	70686
Product Grade	https://prod-vector-labs-pimcore-assets.s3.us-east-1.amazonaws.com/assets/products/image/elite_medium.png
IHC Results	In paraffin embedded Human Placenta shows individual cells in branch villi very close to the surrounding lacuna. Recommended concentration, 2-4µg/ml.
ELISA	
Detection Limit	Antibody detection limit dilution 1:32000.
Application Type	Pep-ELISA, IHC

DOCUMENTS

- [Data Sheet](#)

GALLERY IMAGES

