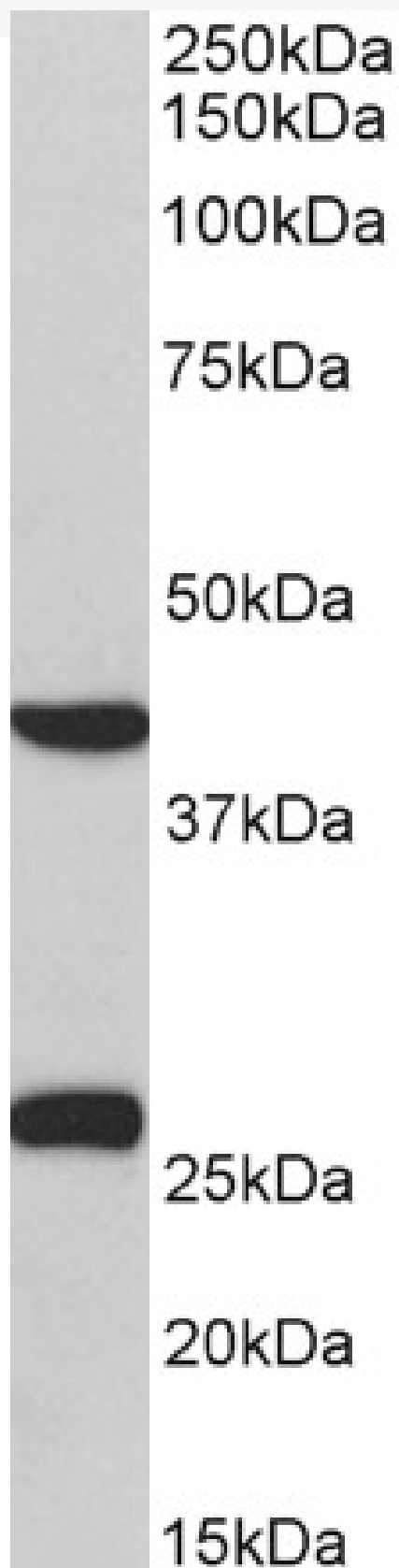


GOAT ANTI-DUSP6 / MKP3 ANTIBODY

SKU: EB11892



SPECIFICATIONS

Formulation	Supplied at 0.5 mg/ml in Tris saline, 0.02% sodium azide, pH7.3 with 0.5% bovine serum albumin.
Unit Size	100 µg
Storage Instructions	Aliquot and store at -20°C. Minimize freezing and thawing.
Accession ID	NP_001937.2; NP_073143.2
Blocking Peptide	EBP11892
Immunogen	Peptide with sequence C-PSNQNVYQVDSLQST, from the C Terminus of the protein sequence according to NP_001937.2; NP_073143.2.
Product Comments	This antibody is expected to recognize both reported isoforms (NP_001937.2; NP_073143.2).
Peptide Sequence	C-PSNQNVYQVDSLQST
Purification Method	Purified from goat serum by ammonium sulphate precipitation followed by antigen affinity chromatography using the immunizing peptide.
Shipping Instructions	Refrigerated
Predicted Species	Human, Mouse, Rat, Dog, Pig, Cow
Reactive Species	Human, Mouse, Rat, Pig
Human Gene ID	1848
Mouse Gene ID	67603
Rat Gene ID	116663
Product Grade	https://prod-vector-labs-pimcore-assets.s3.us-east-1.amazonaws.com/assets/products/image/elite_medium.png
ELISA Detection Limit	Antibody detection limit dilution 1:128000.
Western Blot	Approx 26kDa band observed in Mouse and Rat Heart lysates and 40kDa plus 26kDa bands observed in Human and Pig Heart lysates (calculated MW of 42.3kDa according to NP_001937.2 and 26.5kDa according to NP_073143.2). Recommended concentration: 0.3-1µg/ml.
Application Type	Pep-ELISA, WB

DOCUMENTS

- [Data Sheet](#)

GALLERY IMAGES

