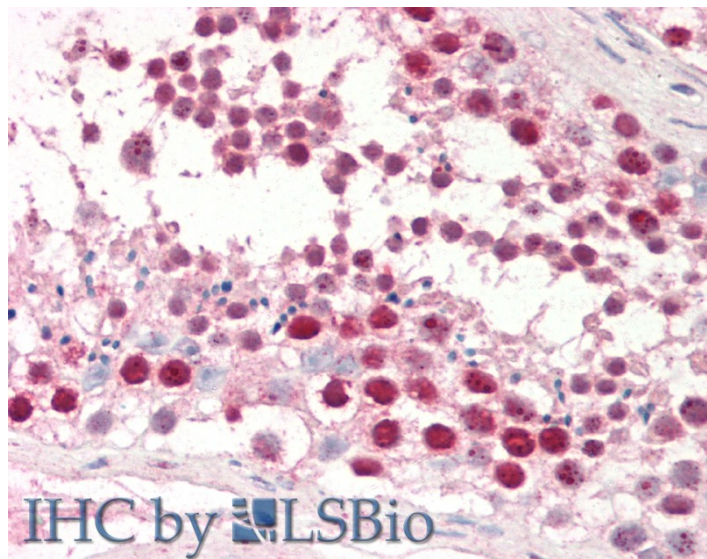


GOAT ANTI-DUTPASE / DUT ANTIBODY

SKU: EB12748



SPECIFICATIONS

Formulation	Supplied at 0.5 mg/ml in Tris saline, 0.02% sodium azide, pH7.3 with 0.5% bovine serum albumin.
Unit Size	100 µg
Storage Instructions	Aliquot and store at -20°C. Minimize freezing and thawing.
Synonym / Alias Names	DUT deoxyuridine triphosphatase dUTPase dUTP nucleotidohydrolase dUTP pyrophosphatase deoxyuridine 5'-triphosphate nucleotidohydrolase, mitochondrial
Accession ID	NP_001020419.1; NP_001939.1; NP_001020420.1
Blocking Peptide	EBP12748
Immunogen	Peptide with sequence C-QLRFARLSEHATPT, from the internal region of the protein sequence according to NP_001020419.1; NP_001939.1; NP_001020420.1.
Product Comments	This antibody is expected to recognize all reported isoforms (NP_001020419.1; NP_001939.1; NP_001020420.1).
Peptide Sequence	C-QLRFARLSEHATPT
Purification Method	Purified from goat serum by ammonium sulphate precipitation followed by antigen affinity chromatography using the immunizing peptide.

Shipping Instructions	Refrigerated
Predicted Species	Human, Pig, Cow
Reactive Species	Human
Human Gene ID	1854
Product Grade	https://prod-vector-labs-pimcore-assets.s3.us-east-1.amazonaws.com/assets/products/image/elite_medium.png
IHC Results	Paraffin embedded Human Testis and Tonsil. Recommended concentration: 5µg/ml.
ELISA	
Detection Limit	Antibody detection limit dilution 1:16000.
Western Blot	Approx 20kDa band observed in lysates of cell lines HEK293 and HeLa (calculated MW of 17.7kDa according to NP_001939.1). Recommended concentration: 0.1-0.3µg/ml. Primary incubation was 1 hour.
Application Type	Pep-ELISA, WB, IHC

DOCUMENTS

- [Data Sheet](#)

GALLERY IMAGES

