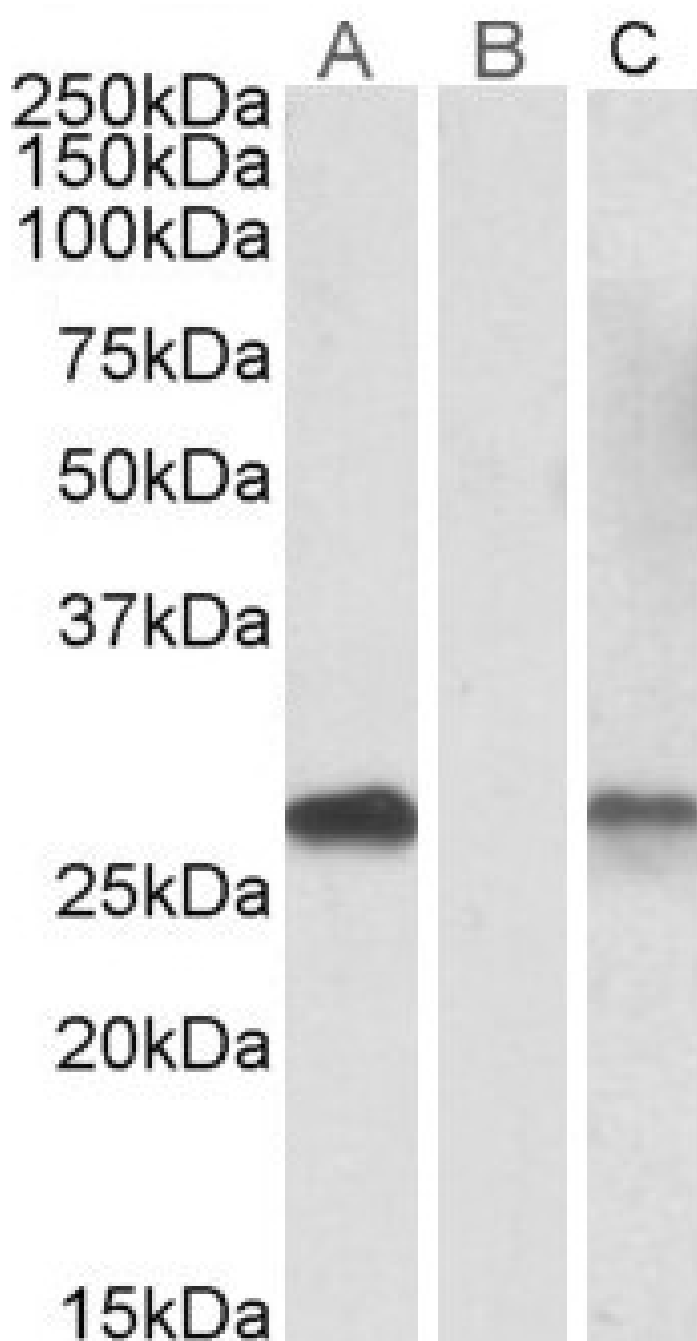


## GOAT ANTI-DYDC1 (AA142-154) ANTIBODY

SKU: EB09820



## SPECIFICATIONS

<b>Formulation</b>	Supplied at 0.5 mg/ml in Tris saline, 0.02% sodium azide, pH7.3 with 0.5% bovine serum albumin.
<b>Unit Size</b>	100 µg
<b>Storage Instructions</b>	Aliquot and store at -20°C. Minimize freezing and thawing.
<b>Synonym / Alias Names</b>	bA36D19.5 BC019250 protein DPY30 domain containing 1 DPY30D1 FLJ43920 OTTHUMP00000019963 DYDC1
<b>Accession ID</b>	NP_620167.1
<b>Blocking Peptide</b>	EBP09820
<b>Immunogen</b>	Peptide with sequence C-TLAEISDRYGAPN, from the internal region of the protein sequence according to NP_620167.1.
<b>Peptide Sequence</b>	C-TLAEISDRYGAPN
<b>Purification Method</b>	Purified from goat serum by ammonium sulphate precipitation followed by antigen affinity chromatography using the immunizing peptide.
<b>Shipping Instructions</b>	Refrigerated
<b>Predicted Species</b>	Human, Mouse, Rat, Cow
<b>Reactive Species</b>	Human, Mouse, Rat
<b>Human Gene ID</b>	143241
<b>Mouse Gene ID</b>	69496
<b>Rat Gene ID</b>	688433
<b>Product Grade</b>	<a href="https://prod-vector-labs-pimcore-assets.s3.us-east-1.amazonaws.com/assets/products/image/elite_medium.png">https://prod-vector-labs-pimcore-assets.s3.us-east-1.amazonaws.com/assets/products/image/elite_medium.png</a>
<b>IHC Results</b>	Paraffin embedded Human Testis. Recommended concentration: 5µg/ml.
<b>ELISA Detection Limit</b>	Antibody detection limit dilution 1:128000.
<b>Western Blot</b>	n transfected HEK293 transiently expressing Human DYDC1 (myc and DYKDDDDK tagged), a band of approx. 28kDa is observed. No bands are observed in mock-transfected HEK293 and the same band is observed using anti-myc tag antibody. This 28kDa band is also observed in Human, Mouse and Rat Testis lysates. Recommended concentration: 0.1-1µg/ml.
<b>Application Type</b>	Pep-ELISA, WB-Trf, IHC

## DOCUMENTS

- [Data Sheet](#)

## GALLERY IMAGES

