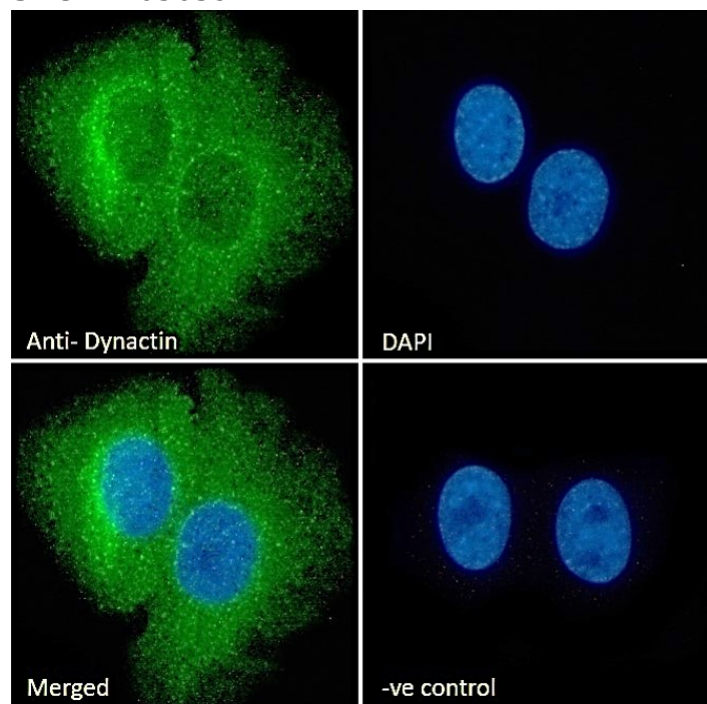


GOAT ANTI-DYNACTIN ANTIBODY

SKU: EB05639



SPECIFICATIONS

Formulation	Supplied at 0.5 mg/ml in Tris saline, 0.02% sodium azide, pH7.3 with 0.5% bovine serum albumin.
Unit Size	100 µg
Storage Instructions	Aliquot and store at -20°C. Minimize freezing and thawing.
Synonym / Alias / Names	p150, Glued homolog dynactin 1 OTTHUMP00000202491 HMN7B dynactin 1 (p150, Glued (Drosophila) homolog) 150 kDa dynein-associated polypeptide p150, Glued (Drosophila) homolog p150-glued DAP-150 DP-150 P135 dynactin 1 (p150, glued homolog, Drosophila) DCTN1
Usage Summary	Immunofluorescence: Strong expression of the protein seen in the cytoplasm of HeLa cells and additionally the nucleus of U2OS cells.. Recommended concentration: 10µg/ml. Flow Cytometry: Flow cytometric analysis of HeLa cells. Recommended concentration: 10ug/ml.
Accession ID	NP_004073.2; NP_075408.1; NP_001128512.1; NP_001128513.1; NP_001177765.1; NP_001177766.1
Blocking Peptide	EBP05639

Immunogen	Peptide with sequence C-QEQLHQLHSRLIS, from the C Terminus of the protein sequence according to NP_004073.2; NP_075408.1; NP_001128512.1; NP_001128513.1; NP_001177765.1; NP_001177766.1.
Product Comments	This antibody is expected to recognise all reported isoforms.
Peptide Sequence	C-QEQLHQLHSRLIS
Purification Method	Purified from goat serum by ammonium sulphate precipitation followed by antigen affinity chromatography using the immunizing peptide.
Shipping Instructions	Refrigerated
Predicted Species	Human, Mouse
Reactive Species	Human
Human Gene ID	1639
Mouse Gene ID	13191
Product Grade	https://prod-vector-labs-pimcore-assets.s3.us-east-1.amazonaws.com/assets/products/image/elite_plus_medium.png
IHC Results	Paraffin embedded Human Brain (Cortex). Recommended concentration: 6-7µg/ml.
ELISA Detection Limit	Antibody detection limit dilution 1:16000.
Western Blot	Approx. 150kDa band observed in HeLa and MCF7 cell lysates, and in preliminary testing of HEK293 and Mouse Brain lysate (calculated MW of 142kDa according to NP_004073.2). Recommended concentration 0.3-1µg/ml. Primary incubation 1 hour at room temperature.
Application Type	Pep-ELISA, WB, IF, IHC, FC

DOCUMENTS

- [Data Sheet](#)

GALLERY IMAGES

