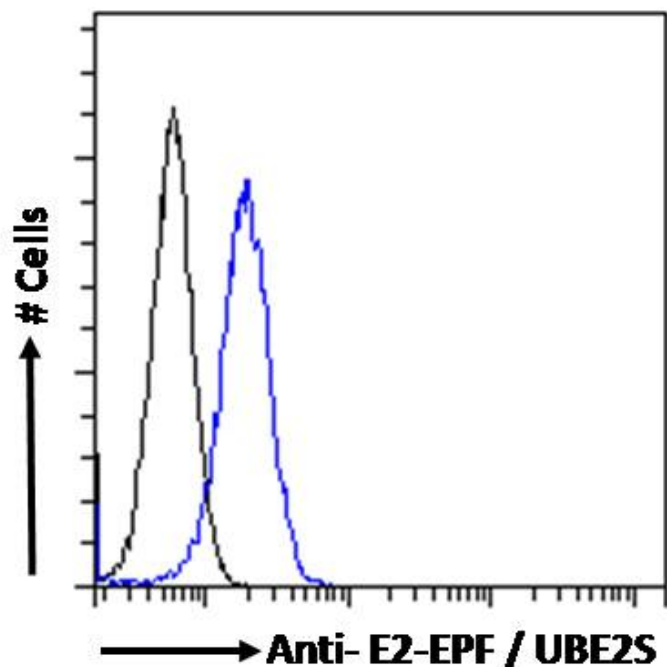


GOAT ANTI-E2-EPF / UBE2S ANTIBODY

SKU: EB05758



SPECIFICATIONS

Formulation Supplied at 0.5 mg/ml in Tris saline, 0.02% sodium azide, pH7.3 with 0.5% bovine serum albumin.

Unit Size 100 µg

Storage Instructions Aliquot and store at -20°C. Minimize freezing and thawing.

Synonym / Alias Names ubiquitin-protein ligase S|ubiquitin carrier protein S|EPF5|E2EPF|ubiquitin-conjugating enzyme E2S|UBE2S|ubiquitin-conjugating enzyme E2-24 kD|ubiquitin-protein ligase|ubiquitin carrier protein|E2-EPF

Usage Summary **Immunofluorescence:** Strong expression of the protein seen in the cytoplasm and nuclei of A431 and HeLa cells. Recommended concentration: 10µg/ml. **Flow Cytometry:** Flow cytometric analysis of HeLa cells. Recommended concentration: 10ug/ml.

Accession ID NP_055316.2

Blocking Peptide EBP05758

Immunogen	Peptide with sequence NSNVENLPPIIR-C, from the N Terminus of the protein sequence according to NP_055316.2.
Peptide Sequence	NSNVENLPPIIR-C
Purification Method	Purified from goat serum by ammonium sulphate precipitation followed by antigen affinity chromatography using the immunizing peptide.
Shipping Instructions	Refrigerated
Predicted Species	Human, Mouse, Rat, Dog, Cow
Reactive Species	Human
Human Gene ID	27338
Mouse Gene ID	77891
Product Grade	https://prod-vector-labs-pimcore-assets.s3.us-east-1.amazonaws.com/assets/products/image/elite_medium.png
ELISA Detection Limit	Antibody detection limit dilution 1:32000.
Application Type	Pep-ELISA, IF, FC

DOCUMENTS

- [Data Sheet](#)

GALLERY IMAGES

