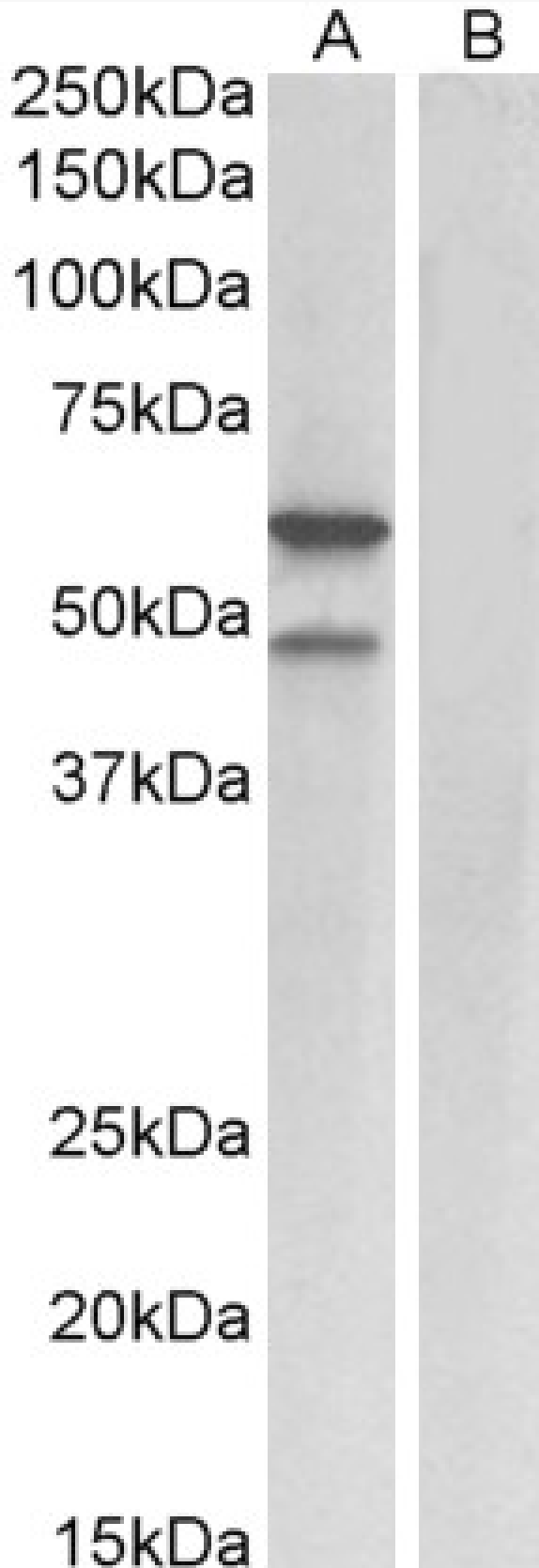


GOAT ANTI-E2F3 (MOUSE) ANTIBODY

SKU: EB09935



SPECIFICATIONS

Formulation	Supplied at 0.5 mg/ml in Tris saline, 0.02% sodium azide, pH7.3 with 0.5% bovine serum albumin.
Unit Size	100 µg
Storage Instructions	Aliquot and store at -20°C. Minimize freezing and thawing.
Synonym / Alias Names	E2f3 OTTMUSP00000000663 mKIAA0075 E2F3b E2f3a E2F transcription factor 3
Accession ID	NP_034223.1
Blocking Peptide	EBP09935
Immunogen	Peptide with sequence DLEKLPLVEDFMCS, from the C Terminus of the protein sequence according to NP_034223.1.
Peptide Sequence	DLEKLPLVEDFMCS
Purification Method	Purified from goat serum by ammonium sulphate precipitation followed by antigen affinity chromatography using the immunizing peptide.
Shipping Instructions	Refrigerated
Predicted Species	Mouse, Human
Reactive Species	Mouse
Human Gene ID	1871
Mouse Gene ID	13557
Product Grade	https://prod-vector-labs-pimcore-assets.s3.us-east-1.amazonaws.com/assets/products/image/elite_medium.png
ELISA Detection Limit	Antibody detection limit dilution 1:8000.
Western Blot	Approx 60kDa and 48kDa band observed in Mouse fetal Lung lysates (calculated MW of 48.8kDa according to NP_034223.1). The 60kDa band was also observed in nuclear lysates of cell line NIH3T3 and it corresponds with different antibodies from other sources. Recommended concentration: 1-3µg/ml.
Application Type	Pep-ELISA, WB

DOCUMENTS

- [Data Sheet](#)

GALLERY IMAGES

