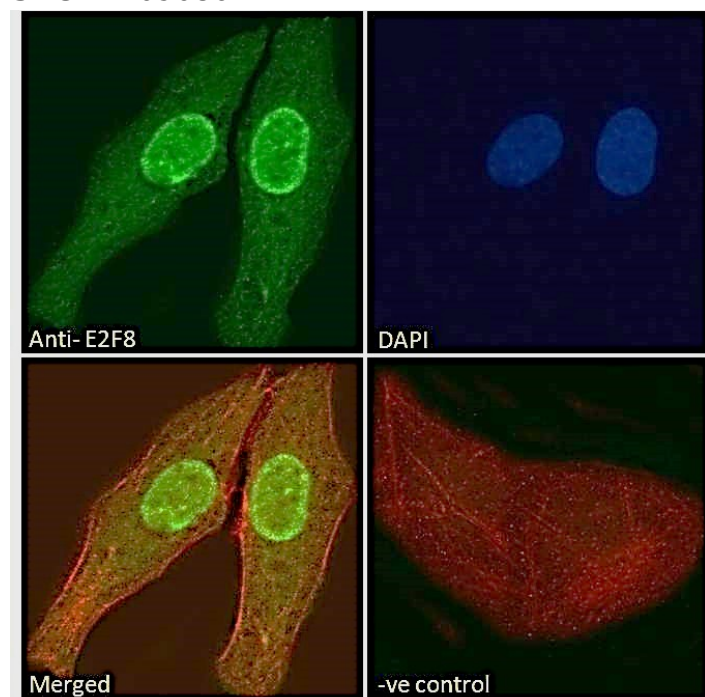


GOAT ANTI-E2F8 ANTIBODY

SKU: EB09086



SPECIFICATIONS

Formulation Supplied at 0.5 mg/ml in Tris saline, 0.02% sodium azide, pH7.3 with 0.5% bovine serum albumin.

Unit Size 100 µg

Storage Instructions Aliquot and store at -20°C. Minimize freezing and thawing.

Synonym /

Alias Names E2F family member 8|FLJ23311|E2F transcription factor 8|E2F8

Usage Summary **Immunofluorescence:** Strong expression of the protein seen in the nuclei and cytoplasm of A431 and U2OS cells. Recommended concentration: 10µg/ml. **Flow Cytometry:** Flow cytometric analysis of A431 cells. Recommended concentration: 10ug/ml.

Accession ID NP_078956.2

Blocking Peptide EBP09086

| | |
|------------------------------|---|
| Immunogen | Peptide with sequence C-KSIESDRRKINSAPS , from the internal region of the protein sequence according to NP_078956.2. |
| Peptide Sequence | C-KSIESDRRKINSAPS |
| Purification Method | Purified from goat serum by ammonium sulphate precipitation followed by antigen affinity chromatography using the immunizing peptide. |
| Shipping Instructions | Refrigerated |
| Predicted Species | Human, Mouse, Cow |
| Reactive Species | Human |
| Human Gene ID | 79733 |
| Mouse Gene ID | 108961 |
| Product Grade | https://prod-vector-labs-pimcore-assets.s3.us-east-1.amazonaws.com/assets/products/image/elite_medium.png |
| ELISA Detection Limit | Antibody detection limit dilution 1:32000. |
| Western Blot | Preliminary testing showed a band at approx 80kDa in Human K562 and Mouse Neuro2a cell lysate after 0.3µg/ml antibody staining. Primary incubation 1 hour at room temperature. |
| Application Type | Pep-ELISA, IF, FC |

DOCUMENTS

- [Data Sheet](#)

GALLERY IMAGES

