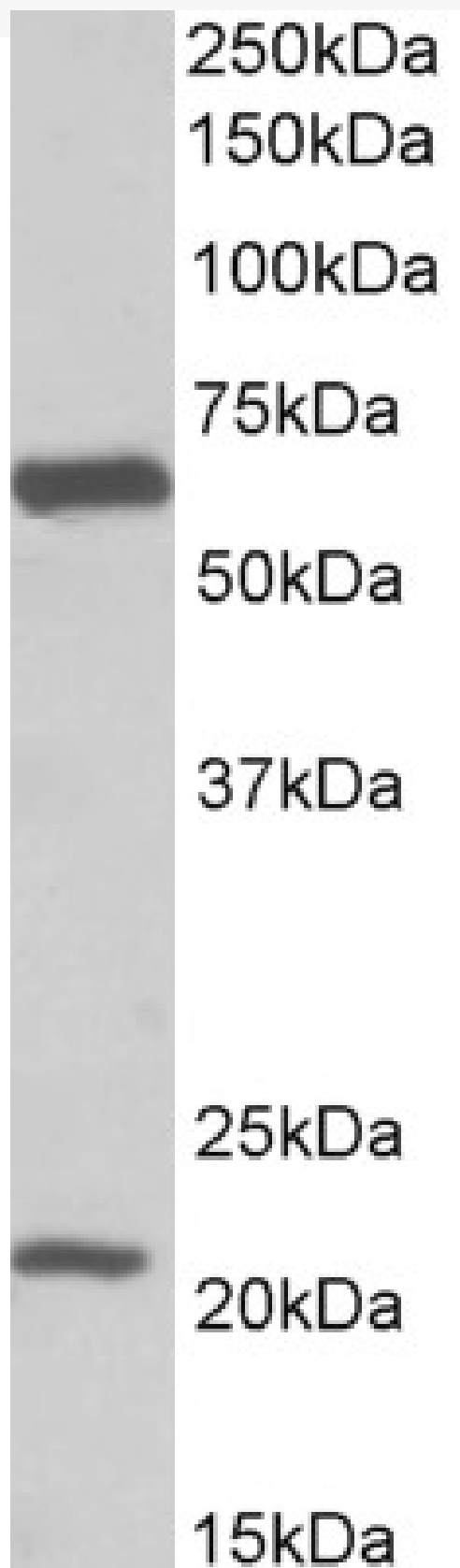


GOAT ANTI-EAAT1 / GLAST1 (AA197-208) ANTIBODY

SKU: EB11915



SPECIFICATIONS

Formulation Supplied at 0.5 mg/ml in Tris saline, 0.02% sodium azide, pH7.3 with 0.5% bovine serum albumin.

Unit Size 100 µg

Storage Instructions Aliquot and store at -20°C. Minimize freezing and thawing.

Synonym / Alias Names SLC1A3|solute carrier family 1 (glial high affinity glutamate transporter), member 3|EA6|EAAT1|FLJ25094|GLAST|GLAST1|GLAST-1|OTTHUMP00000116002|excitatory amino acid transporter 1|sodium-dependent glutamate/aspartate transporter 1|solute carrier family 1 member 3

Accession ID NP_004163.3; NP_001160167.1

Blocking Peptide EBP11915

Immunogen Peptide with sequence C-RSFKVPIQANET, from the internal region of the protein sequence according to NP_004163.3; NP_001160167.1.

Product Comments This antibody is expected to recognize isoform 1 (NP_004163.3) and isoform 2 (NP_001160167.1).

Peptide Sequence C-RSFKVPIQANET

Purification Method Purified from goat serum by ammonium sulphate precipitation followed by antigen affinity chromatography using the immunizing peptide.

Shipping Instructions Refrigerated

Predicted Species Human, Rat

Reactive Species Human

Human Gene ID 6507

Rat Gene ID 29483

Product Grade https://prod-vector-labs-pimcore-assets.s3.us-east-1.amazonaws.com/assets/products/image/elite_medium.png

ELISA Detection Limit Antibody detection limit dilution 1:128000.

Western Blot Approx 60kDa band observed in Human Brain (Frontal Cortex) lysates (calculated MW of 59.6kDa according to NP_004163.3). Recommended concentration: 0.1-0.3µg/ml. An additional band of unknown identity was also consistently observed at 22kDa. This band was successfully blocked by incubation with the immunizing peptide. We would appreciate any feedback from people in the field - have any such results been reported with other antibodies/lysates? Have any further splice variants/modified forms been reported?

Application Type Pep-ELISA, WB

DOCUMENTS

- [Data Sheet](#)

GALLERY IMAGES

