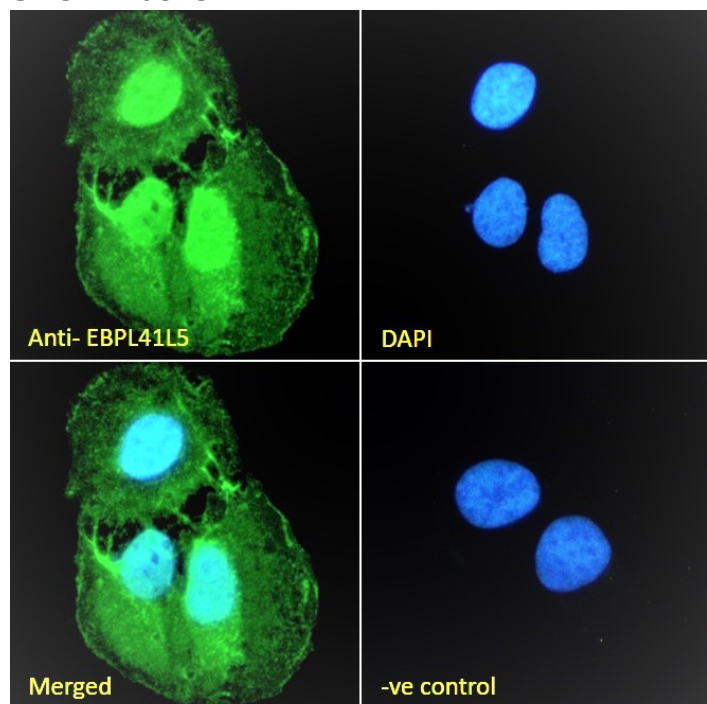


# GOAT ANTI-EBPL41L5 ANTIBODY

SKU: EB08237



## SPECIFICATIONS

<b>Formulation</b>	Supplied at 0.5 mg/ml in Tris saline, 0.02% sodium azide, pH7.3 with 0.5% bovine serum albumin.
<b>Unit Size</b>	100 µg
<b>Storage Instructions</b>	Aliquot and store at -20°C. Minimize freezing and thawing.
<b>Synonym / Alias Names</b>	KIAA1548 FLJ12957 BE37 erythrocyte membrane protein band 4.1 like 5 EPB41L5
<b>Usage Summary</b>	<p><b>Immunofluorescence:</b> Strong expression of the protein seen in U2OS and A549 cells.</p> <p><b>Flow Cytometry:</b> Flow cytometric analysis of A549 cells. Recommended concentration: 10ug/ml.</p>
<b>Accession ID</b>	NP_065960.2; NP_001171866.1; NP_001171868.1; NP_001317239.1
<b>Blocking Peptide</b>	EBP08237

<b>Immunogen</b>	Peptide with sequence C-ENLPQSPGTDQHD, from the internal region of the protein sequence according to NP_065960.2; NP_001171866.1; NP_001171868.1; NP_001317239.1.
<b>Peptide Sequence</b>	C-ENLPQSPGTDQHD
<b>Purification Method</b>	Purified from goat serum by ammonium sulphate precipitation followed by antigen affinity chromatography using the immunizing peptide.
<b>Shipping Instructions</b>	Refrigerated
<b>Predicted Species</b>	Human
<b>Reactive Species</b>	Human
<b>Human Gene ID</b>	57669
<b>Product Grade</b>	<a href="https://prod-vector-labs-pimcore-assets.s3.us-east-1.amazonaws.com/assets/products/image/elite_plus_medium.png">https://prod-vector-labs-pimcore-assets.s3.us-east-1.amazonaws.com/assets/products/image/elite_plus_medium.png</a>
<b>ELISA Detection Limit</b>	Antibody detection limit dilution 1:8000.
<b>Western Blot</b>	Approx. 80kDa band observed in lysates of cell line A431 and approx. 75kDa in lysates of cell line MCF7 (calculated MW of 81.9kDa according to NP_065960.2). Recommended concentration: 0.3-1µg/ml. Primary incubation 1 hour at room temperature.
<b>Application Type</b>	Pep-ELISA, WB, IF, FC

## DOCUMENTS

- [Data Sheet](#)

## GALLERY IMAGES

