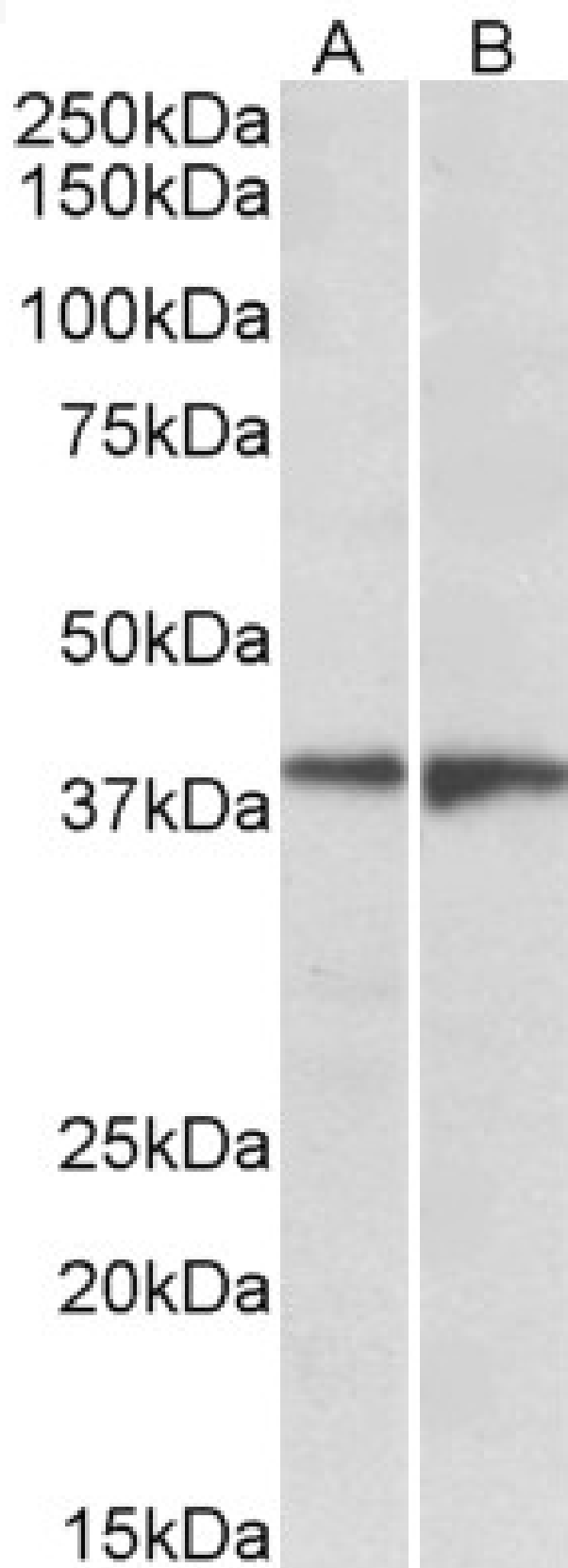


# GOAT ANTI-EDG8 / SPPR1 ANTIBODY

**SKU:** EB09535



## SPECIFICATIONS

<b>Formulation</b>	Supplied at 0.5 mg/ml in Tris saline, 0.02% sodium azide, pH7.3 with 0.5% bovine serum albumin.
<b>Unit Size</b>	100 µg
<b>Storage Instructions</b>	Aliquot and store at -20°C. Minimize freezing and thawing.
<b>Synonym / Alias Names</b>	sphingosine 1-phosphate receptor Edg-8 sphingosine 1-phosphate receptor 5 endothelial differentiation, sphingolipid G-protein-coupled receptor, 8 SPPR-2 SPPR-1 S1P5 Edg-8 EDG8 sphingosine-1-phosphate receptor 5 S1PR5
<b>Accession ID</b>	NP_110387.1
<b>Blocking Peptide</b>	EBP09535
<b>Immunogen</b>	Peptide with sequence C-SGSESSPQRDGLD, from the internal region (near C Terminus) of the protein sequence according to NP_110387.1.
<b>Peptide Sequence</b>	C-SGSESSPQRDGLD
<b>Purification Method</b>	Purified from goat serum by ammonium sulphate precipitation followed by antigen affinity chromatography using the immunizing peptide.
<b>Shipping Instructions</b>	Refrigerated
<b>Predicted Species</b>	Human, Pig, Cow
<b>Reactive Species</b>	Human
<b>Human Gene ID</b>	53637
<b>Product Grade</b>	<a href="https://prod-vector-labs-pimcore-assets.s3.us-east-1.amazonaws.com/assets/products/image/elite_medium.png">https://prod-vector-labs-pimcore-assets.s3.us-east-1.amazonaws.com/assets/products/image/elite_medium.png</a>
<b>ELISA</b>	
<b>Detection Limit</b>	Antibody detection limit dilution 1:2000.
<b>Western Blot</b>	Approx 38kDa band observed in Human Brain (Frontal Cortex and Amygdala) lysates (calculated MW of 41.8kDa according to NP_110387.1). Recommended concentration: 1-3µg/ml.
<b>Application Type</b>	Pep-ELISA, WB

## DOCUMENTS

- [Data Sheet](#)

## GALLERY IMAGES

