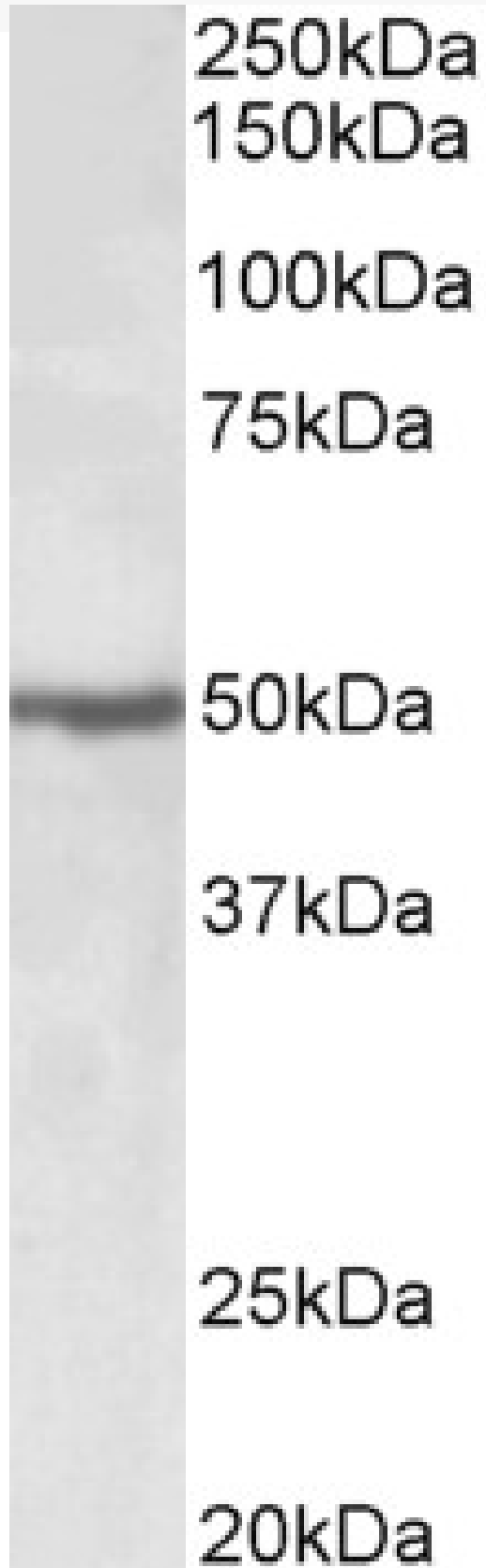


# GOAT ANTI-EEF1A2 ANTIBODY

**SKU:** EB11854



## SPECIFICATIONS

<b>Formulation</b>	Supplied at 0.5 mg/ml in Tris saline, 0.02% sodium azide, pH7.3 with 0.5% bovine serum albumin.
<b>Unit Size</b>	100 µg
<b>Storage Instructions</b>	Aliquot and store at -20°C. Minimize freezing and thawing.
<b>Synonym / Alias Names</b>	STNL STN statin-S1 statin S1 OTTHUMP00000031776 HS1 FLJ41696 eukaryotic translation elongation factor 1 alpha 2 eukaryotic elongation factor 1 A-2 elongation factor-1 alpha elongation factor 1-alpha 2 EF-1-alpha-2 EF1A EEF1A eEF1A-2 EEF1A2
<b>Accession ID</b>	NP_001949.1
<b>Blocking Peptide</b>	EBP11854
<b>Immunogen</b>	Peptide with sequence C-NPATVPFVPIS, from the internal region of the protein sequence according to NP_001949.1.
<b>Peptide Sequence</b>	C-NPATVPFVPIS
<b>Purification Method</b>	Purified from goat serum by ammonium sulphate precipitation followed by antigen affinity chromatography using the immunizing peptide.
<b>Shipping Instructions</b>	Refrigerated
<b>Predicted Species</b>	Human, Mouse, Rat, Dog, Cow
<b>Reactive Species</b>	Human, Mouse, Rat
<b>Human Gene ID</b>	1917
<b>Mouse Gene ID</b>	13628
<b>Rat Gene ID</b>	24799
<b>Product Grade</b>	<a href="https://prod-vector-labs-pimcore-assets.s3.us-east-1.amazonaws.com/assets/products/image/elite_medium.png">https://prod-vector-labs-pimcore-assets.s3.us-east-1.amazonaws.com/assets/products/image/elite_medium.png</a>
<b>ELISA Detection Limit</b>	Antibody detection limit dilution 1:8000.
<b>Western Blot</b>	Approx 50kDa band observed in lysates of cell lines Daudi and Jurkat (calculated MW of 50.5kDa according to NP_001949.1). The same band is observed in lysates of Mouse and Rat Heart and Skeletal Muscle. Recommended concentration: 0.5-2µg/ml.
<b>Application Type</b>	Pep-ELISA, WB

## DOCUMENTS

- [Data Sheet](#)

## GALLERY IMAGES

