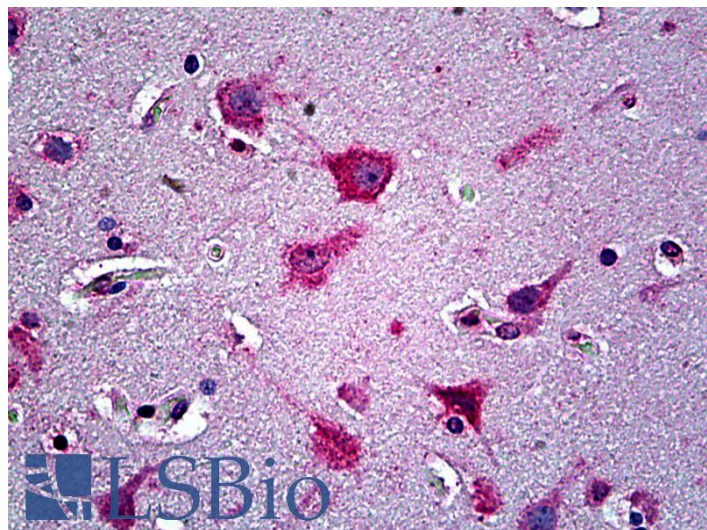


# GOAT ANTI-EFNA5 ANTIBODY

**SKU:** EB09784



## SPECIFICATIONS

**Formulation** Supplied at 0.5 mg/ml in Tris saline, 0.02% sodium azide, pH7.3 with 0.5% bovine serum albumin.

**Unit Size** 100 µg

**Storage Instructions** Aliquot and store at -20°C. Minimize freezing and thawing.

**Synonym /**

**Alias Names** EFNA5|RAGS|LERK7|GLC1M|EPLG7|ephrin-A5|eph-related receptor tyrosine kinase ligand 7|EFL5|AF1

**Accession ID** NP\_001953.1

**Blocking Peptide** EBP09784

**Immunogen** Peptide with sequence C-DDTVHESAEPSR, from the internal region of the protein sequence according to NP\_001953.1.

**Peptide Sequence** C-DDTVHESAEPSR

**Purification Method** Purified from goat serum by ammonium sulphate precipitation followed by antigen affinity chromatography using the immunizing peptide.

**Shipping Instructions** Refrigerated

<b>Predicted Species</b>	Human, Mouse, Rat, Dog, Cow
<b>Reactive Species</b>	Human
<b>Human Gene ID</b>	1946
<b>Mouse Gene ID</b>	13640
<b>Rat Gene ID</b>	116683
<b>Product Grade</b>	<a href="https://prod-vector-labs-pimcore-assets.s3.us-east-1.amazonaws.com/assets/products/image/elite_medium.png">https://prod-vector-labs-pimcore-assets.s3.us-east-1.amazonaws.com/assets/products/image/elite_medium.png</a>
<b>IHC Results</b>	Paraffin embedded Human Brain (Cortex and Cerebellum). Recommended concentration: 3.75µg/ml.
<b>ELISA</b>	
<b>Detection Limit</b>	Antibody detection limit dilution 1:8000.
<b>Application Type</b>	Pep-ELISA, IHC

## DOCUMENTS

- [Data Sheet](#)

## GALLERY IMAGES

