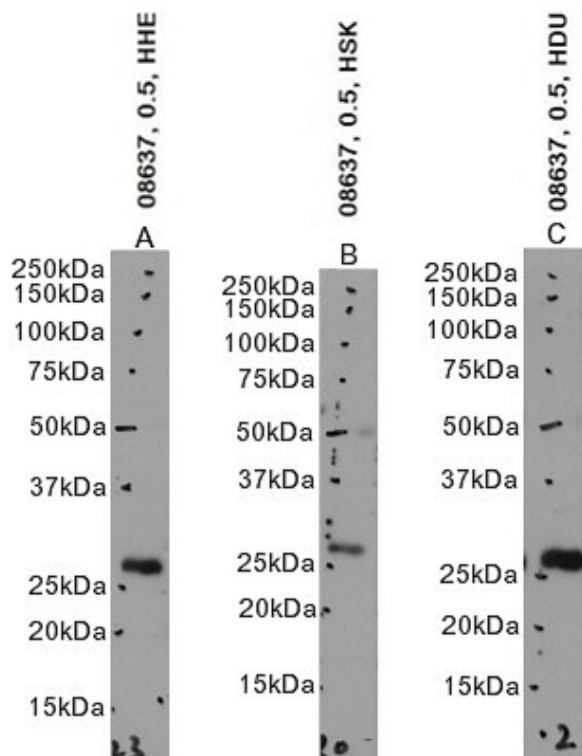


GOAT ANTI-EGLN3 ANTIBODY

SKU: EB08637



SPECIFICATIONS

Formulation Supplied at 0.5 mg/ml in Tris saline, 0.02% sodium azide, pH7.3 with 0.5% bovine serum albumin.

Unit Size 100 µg

Storage Instructions Aliquot and store at -20°C. Minimize freezing and thawing.

Synonym / Alias Names egl nine-like protein 3 isoform|egl nine homolog 3|EGL nine (C.elegans) homolog 3|PHD3|MGC125999|MGC125998|HIFPH3|FLJ21620|egl nine homolog 3 (C. elegans)|EGLN3

Accession ID	NP_071356.1
Blocking Peptide	EBP08637
Immunogen	Peptide with sequence C-RLGKYYVKERSK, from the internal region of the protein sequence according to NP_071356.1.
Peptide Sequence	C-RLGKYYVKERSK
Purification Method	Purified from goat serum by ammonium sulphate precipitation followed by antigen affinity chromatography using the immunizing peptide.
Shipping Instructions	Refrigerated
Predicted Species	Human, Mouse, Rat, Dog, Cow
Reactive Species	Human
Human Gene ID	112399
Mouse Gene ID	112407
Rat Gene ID	54702
Product Grade	https://prod-vector-labs-pimcore-assets.s3.us-east-1.amazonaws.com/assets/products/image/elite_medium.png
ELISA Detection Limit	Antibody detection limit dilution 1:8000.
Western Blot	Approx. 26kDa band observed in Human Skin and Duodenum lysates and approx. 27kDa on Human Heart lysates (calculated MW of 27.7kDa according to NP_071356.1). Recommended concentration: 0.5-1µg/ml. Primary incubation 1 hour at room temperature.
Application Type	Pep-ELISA, WB

DOCUMENTS

- [Data Sheet](#)

GALLERY IMAGES

