



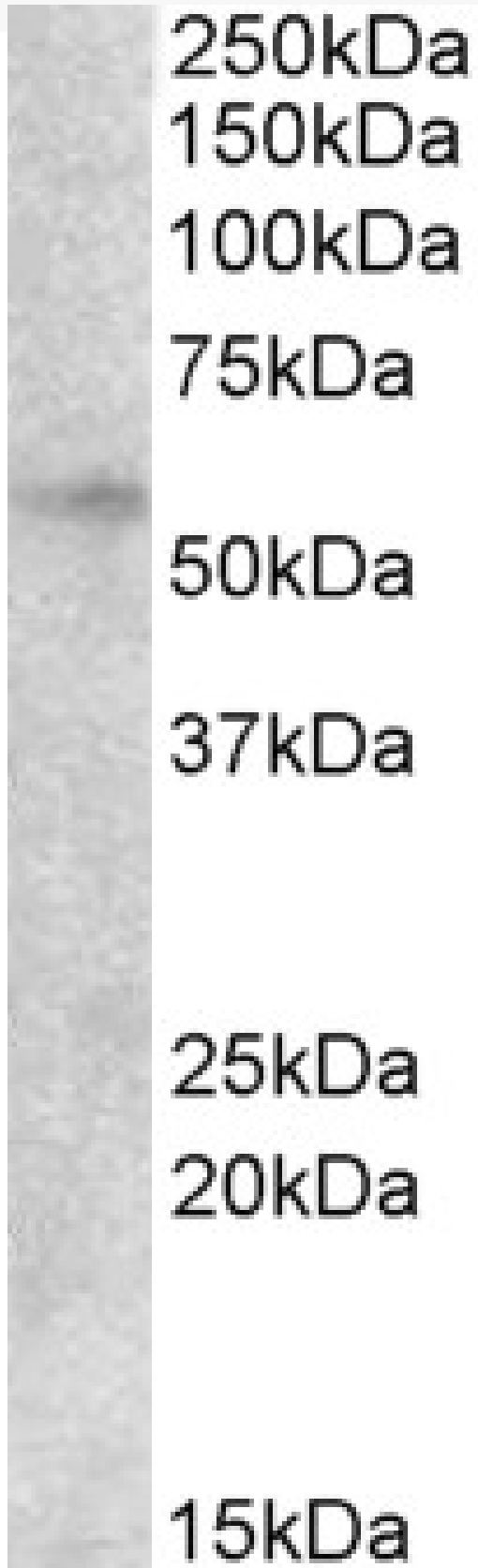
www.everestbiotech.com

Email: customerservice@vectorlabs.com

Telephone: [\(650\) 697-3600](tel:(650)697-3600)

GOAT ANTI-EGR2 ANTIBODY

SKU: EB07891





SPECIFICATIONS

Formulation	Supplied at 0.5 mg/ml in Tris saline, 0.02% sodium azide, pH7.3 with 0.5% bovine serum albumin.
Unit Size	100 µg
Storage Instructions	Aliquot and store at -20°C. Minimize freezing and thawing.
Synonym / Alias Names	early growth response 2 protein OTTHUMP00000062133 Krox-20 homolog KROX-20, Drosophila, homolog (early growth response-2) KROX20 FLJ14547 DKFZp686j1957 CMT4E CMT1D early growth response 2 (Krox-20 homolog, Drosophila) EGR2
Accession ID	NP_000390.2
Blocking Peptide	EBP07891
Immunogen	Peptide with sequence HGTAGPDRKPFPC, from the internal region of the protein sequence according to NP_000390.2.
Peptide Sequence	HGTAGPDRKPFPC
Purification Method	Purified from goat serum by ammonium sulphate precipitation followed by antigen affinity chromatography using the immunizing peptide.
Shipping Instructions	Refrigerated
Predicted Species	Human, Mouse, Rat, Dog
Reactive Species	Human
Human Gene ID	1959
Mouse Gene ID	13654
Rat Gene ID	114090
Product Grade	https://prod-vector-labs-pimcore-assets.s3.us-east-1.amazonaws.com/assets/products/image/elite_medium.png
ELISA Detection Limit	Antibody detection limit dilution 1:8000.
Western Blot	Approx 55kDa band observed in lysates of cell line HepG2 (calculated MW of 50.3kDa according to NP_000390.2). Recommended concentration: 2-6µg/ml. Primary incubation was 1 hour.
Application Type	Pep-ELISA, WB



www.everestbiotech.com

Email: customerservice@vectorlabs.com

Telephone: [\(650\) 697-3600](tel:(650)697-3600)

DOCUMENTS

- [Data Sheet](#)

GALLERY IMAGES

