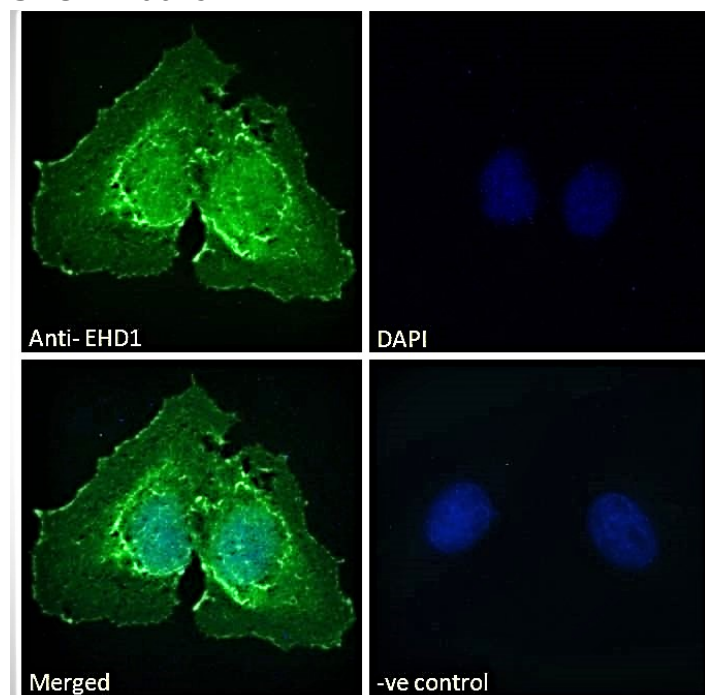


## GOAT ANTI-EHD1 ANTIBODY

SKU: EB06492



## SPECIFICATIONS

**Formulation** Supplied at 0.5 mg/ml in Tris saline, 0.02% sodium azide, pH7.3 with 0.5% bovine serum albumin.

**Unit Size** 100 µg

**Storage Instructions** Aliquot and store at -20°C. Minimize freezing and thawing.

**Synonym /**

**Alias Names** OTTHUMP00000069747|FLJ44618|FLJ42622|testilin|EH-domain containing 1|HPAST1|H-PAST|PAST1|PAST|EHD1

**Usage Summary** **Immunofluorescence:** Strong expression of the protein seen in the membranes and cytoplasm of HeLa and U2OS cells. Recommended concentration: 10µg/ml. **Flow Cytometry:** Flow cytometric analysis of HeLa cells. Recommended concentration: 10ug/ml.

**Accession ID** NP\_001269373.1; NP\_001269374.1

**Blocking Peptide** EBP06492

**Immunogen** Peptide with sequence FSWVSKDARRKKEPC, from the N Terminus of the protein sequence according to NP\_001269373.1; NP\_001269374.1.

|                              |   |
|------------------------------|---|
| <b>Peptide Sequence</b>      | FSWVSKDARRKKEPC   |
| <b>Purification Method</b>   | Purified from goat serum by ammonium sulphate precipitation followed by antigen affinity chromatography using the immunizing peptide.   |
| <b>Shipping Instructions</b> | Refrigerated  |
| <b>Predicted Species</b>     | Human, Mouse, Rat, Cow  |
| <b>Reactive Species</b>      | Human, Mouse  |
| <b>Human Gene ID</b>         | 10938   |
| <b>Product Grade</b>         | <a href="https://prod-vector-labs-pimcore-assets.s3.us-east-1.amazonaws.com/assets/products/image/elite_plus_medium.png">https://prod-vector-labs-pimcore-assets.s3.us-east-1.amazonaws.com/assets/products/image/elite_plus_medium.png</a>   |
| <b>IHC Results</b>           | Paraffin embedded Human Thymus and Brain (Cortex). Recommended concentration: 3.75µg/ml.  |
| <b>ELISA Detection Limit</b> | Antibody detection limit dilution 1:32000.  |
| <b>Western Blot</b>          | Approx 60kDa band observed in lysates of cell line NIH3T3 (calculated MW of 60.6kDa according to Mouse NP_0342491) Preliminary testing also showed a band at approx 60kDa in Human Lymph node and Rat Kidney lysate and in HeLa cell lysate. Recommended concentration: 0.03-0.1µg/ml. Primary incubation 1 hour at room temperature. |
| <b>Application Type</b>      | Pep-ELISA, WB, IF, IHC, FC  |

## GALLERY IMAGES

