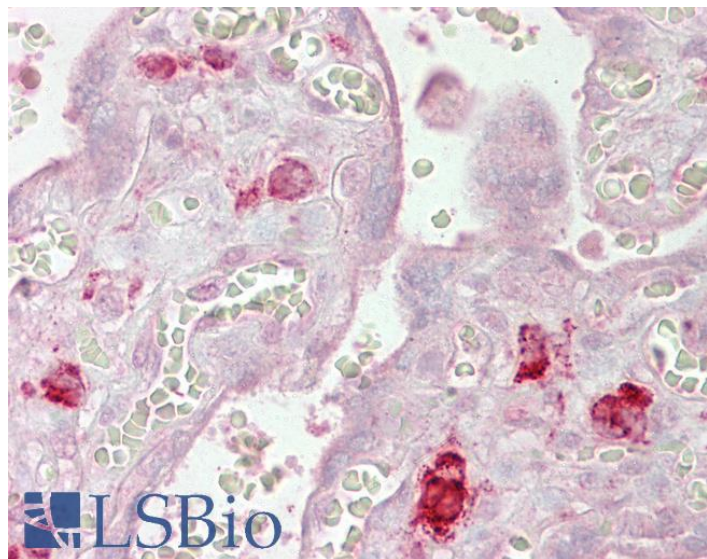


GOAT ANTI-EIF2C1 / AGO1 ANTIBODY

SKU: EB07129



SPECIFICATIONS

Formulation Supplied at 0.5 mg/ml in Tris saline, 0.02% sodium azide, pH7.3 with 0.5% bovine serum albumin.

Unit Size 100 µg

Storage Instructions Aliquot and store at -20°C. Minimize freezing and thawing.

Synonym / Alias Names putative RNA-binding protein Q99|argonaute 1|Golgi Endoplasmic Reticulum protein 95 kDa|Q99|GERP95|EIF2C|AGO1|eukaryotic translation initiation factor 2C, 1|EIF2C1

Accession ID NP_036331.1

Blocking Peptide EBP07129

Immunogen Peptide with sequence C-KNASYNLDPYIQEF, from the internal region of the protein sequence according to NP_036331.1.

Product Comments This product is not expected to cross-react with EIF2C2, EIF2C3 and EIF2C4.

Peptide Sequence C-KNASYNLDPYIQEF

Purification Method Purified from goat serum by ammonium sulphate precipitation followed by antigen affinity chromatography using the immunizing peptide.

Shipping Instructions	Refrigerated
Predicted Species	Human, Mouse, Rat, Dog
Reactive Species	Human
Human Gene ID	26523
Product Grade	https://prod-vector-labs-pimcore-assets.s3.us-east-1.amazonaws.com/assets/products/image/elite_medium.png
IHC Results	Paraffin embedded Human Placenta and Small Intestine. Recommended concentration: 2.5µg/ml.
ELISA	
Detection Limit	Antibody detection limit dilution 1:16000.
Western Blot	In transfected HEK293 transiently expressing Human EIF2C1 bands of approx. 110kDa and 35kDa are observed. The 110kDa band is not observed in the non-transfected HEK293. The calculated molecular size is 97.2kDa according to NP_036331.1. Recommended concentration, 0.3-1µg/ml.
Application Type	Pep-ELISA, WB-Trf, IHC

DOCUMENTS

- [Data Sheet](#)

GALLERY IMAGES

