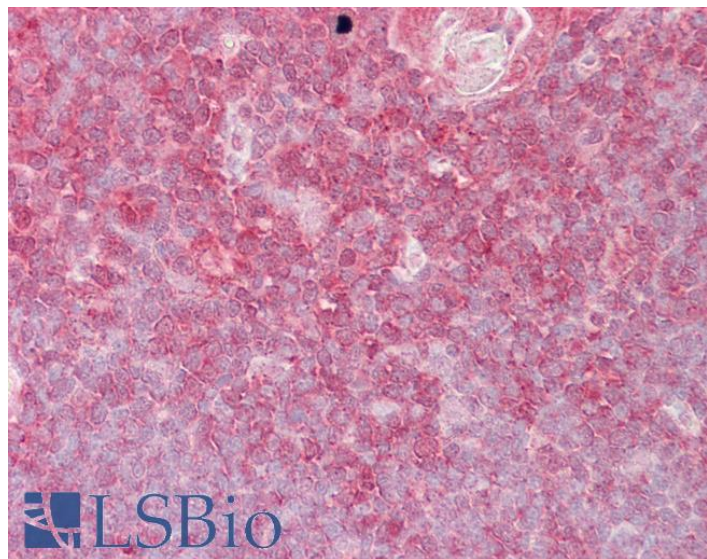


GOAT ANTI-ELF1 ANTIBODY

SKU: EB05528



SPECIFICATIONS

Formulation Supplied at 0.5 mg/ml in Tris saline, 0.02% sodium azide, pH7.3 with 0.5% bovine serum albumin.

Unit Size 100 µg

Storage Instructions Aliquot and store at -20°C. Minimize freezing and thawing.

Synonym / Alias Names ets-related transcription factor Elf-1|OTTHUMP00000018310|E74-like factor 1 (ets domain transcription factor)|ELF1

Accession ID NP_758961.1; NP_001138825.1

Blocking Peptide EBP05528

Immunogen Peptide with sequence C-AMKQNELLEPNSF, from the C Terminus of the protein sequence according to NP_758961.1; NP_001138825.1.

Product Comments This antibody is expected to recognise both reported isoforms.

Peptide Sequence C-AMKQNELLEPNSF

Purification Method Purified from goat serum by ammonium sulphate precipitation followed by antigen affinity chromatography using the immunizing peptide.

Shipping Instructions	Refrigerated
Predicted Species	Human, Mouse
Reactive Species	Human, Mouse
Human Gene ID	1997
Mouse Gene ID	13709
Product Grade	https://prod-vector-labs-pimcore-assets.s3.us-east-1.amazonaws.com/assets/products/image/elite_medium.png
IHC Results	Paraffin embedded Human Thymus. Recommended concentration: 2.5µg/ml.
ELISA	
Detection Limit	Antibody detection limit dilution 1:64000.
Western Blot	Approx 65kDa band observed in Human Lymph Node and Tonsil and in Mouse Thymus lysates (calculated MW of 64.9kDa according to Human NP_001138825.1 and 62.3kDa according to Mouse NP_001273341.1). Recommended concentration: 0.1-0.3µg/ml. Approx 70kDa band observed in lysates of cell line Jurkat (calculated MW of 67.5kDa according to NP_758961.1). Recommended concentration: 0.03-0.1µg/ml.
Application Type	Pep-ELISA, WB, IHC

DOCUMENTS

- [Data Sheet](#)

GALLERY IMAGES

