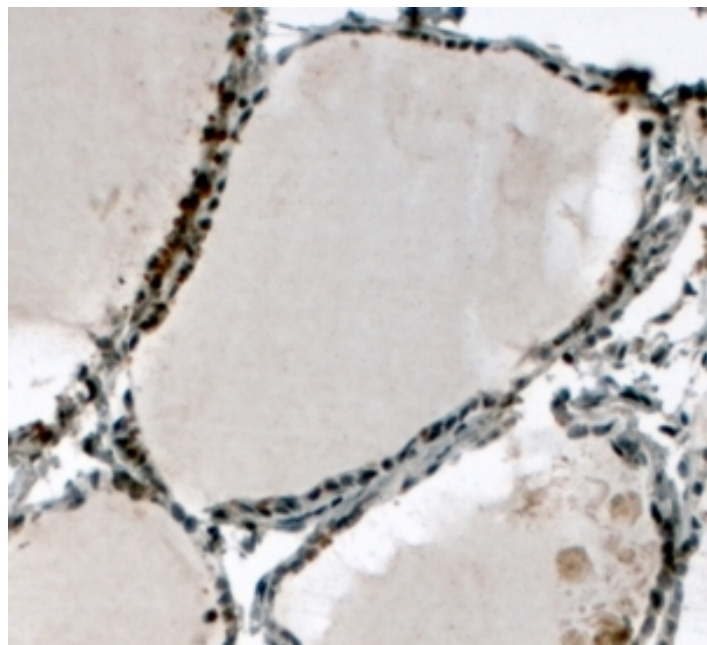


GOAT ANTI-ELF5 ANTIBODY

SKU: EB05511



SPECIFICATIONS

Formulation Supplied at 0.5 mg/ml in Tris saline, 0.02% sodium azide, pH7.3 with 0.5% bovine serum albumin.

Unit Size 100 µg

Storage Instructions Aliquot and store at -20°C. Minimize freezing and thawing.

Synonym / Alias Names epithelium-specific Ets transcription factor 2|E74-like factor 5|ESE-2|ESE2|E74-like factor 5 (ets domain transcription factor)|ELF5

Accession ID NP_938195.1; NP_001413.1, NP_001230009.1, NP_001230010.1

Blocking Peptide EBP05511

Immunogen Peptide with sequence C-GKNAHWQEDKL, from the C Terminus of the protein sequence according to NP_938195.1; NP_001413.1, NP_001230009.1, NP_001230010.1.

Product Comments This antibody is expected to recognise reported Human isoforms represented by NP_938195.1, NP_001413.1, NP_001230009.1 and NP_001230010.1

Peptide Sequence C-GKNAHWQEDKL

Purification Method	Purified from goat serum by ammonium sulphate precipitation followed by antigen affinity chromatography using the immunizing peptide.
Shipping Instructions	Refrigerated
Predicted Species	Human, Mouse, Rat, Cow
Human Gene ID	2001
Mouse Gene ID	13711
Product Grade	https://prod-vector-labs-pimcore-assets.s3.us-east-1.amazonaws.com/assets/products/image/aspiring_medium.png
ELISA Detection Limit	Antibody detection limit dilution 1:128000.
Western Blot	Preliminary experiments in Human lysates of Lung, Kidney, Prostate and Testes gave no specific signal but low background (at antibody concentration up to 1µg/ml).
Application Type	Pep-ELISA

DOCUMENTS

- [Data Sheet](#)

GALLERY IMAGES

