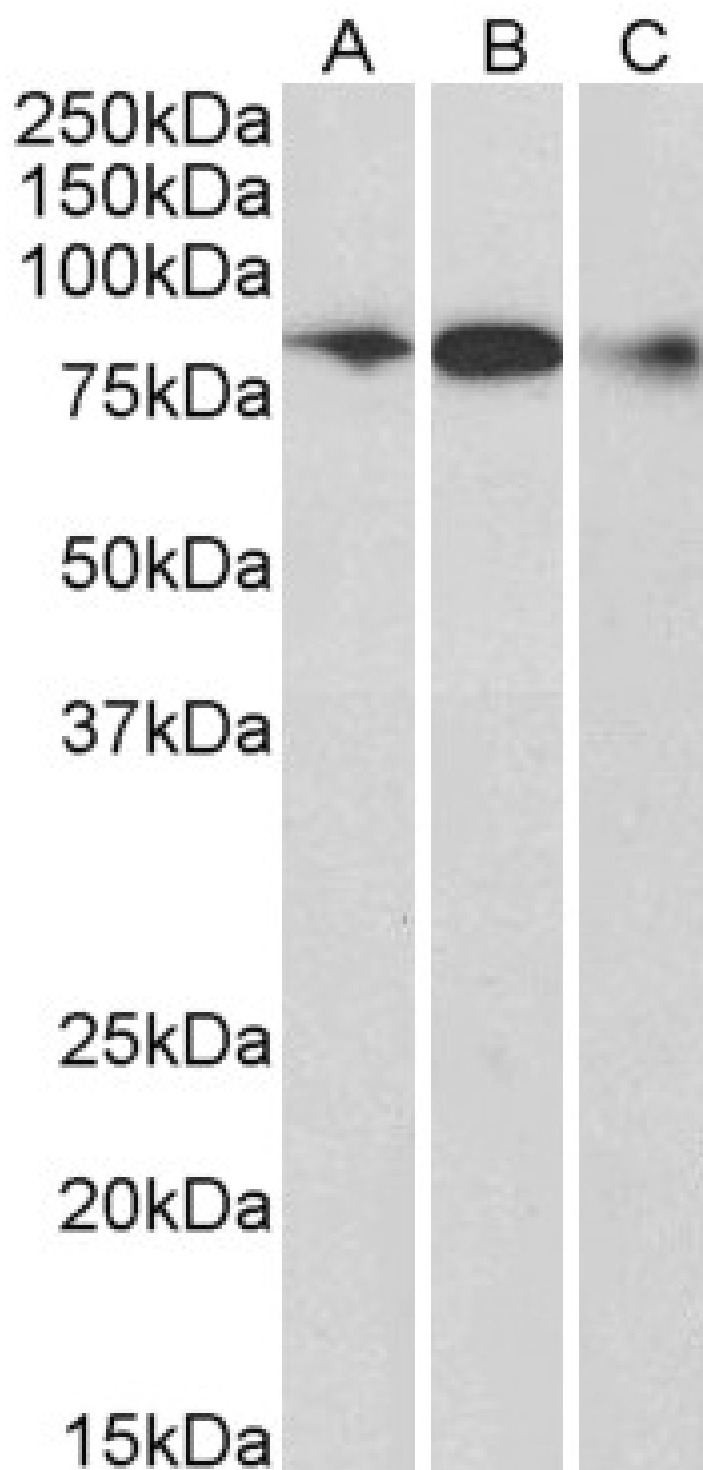


## GOAT ANTI-ELMO1 ANTIBODY

**SKU:** EB05297



## SPECIFICATIONS

<b>Formulation</b>	Supplied at 0.5 mg/ml in Tris saline, 0.02% sodium azide, pH7.3 with 0.5% bovine serum albumin.
<b>Unit Size</b>	100 µg
<b>Storage Instructions</b>	Aliquot and store at -20°C. Minimize freezing and thawing.
<b>Synonym / Alias Names</b>	OTTHUMP00000207060 OTTHUMP00000207056 MGC126406 ELMO-1 CED-12 engulfment and cell motility 1 ced-12 homolog 1 KIAA0281 CED12 engulfment and cell motility 1 (ced-12 homolog, C. elegans) ELMO1
<b>Usage Summary</b>	<strong>Immunoprecipitation:</strong> A customer found positive results in IP on Human promyelocytic leukemia cells (HL60). <strong>This data is from a previous batch, not on sale.</strong>
<b>Accession ID</b>	NP_055615.8; NP_569709.1; NP_001034548.1
<b>Blocking Peptide</b>	EBP05297
<b>Immunogen</b>	Peptide with sequence PKEPSNYDFVYDCN, from the C Terminus of the protein sequence according to NP_055615.8; NP_569709.1; NP_001034548.1.
<b>Product Comments</b>	This antibody is expected to recognise both human isoforms of this protein. NP_569709.1 and NP_001034548.1 represent the same isoform.
<b>Peptide Sequence</b>	PKEPSNYDFVYDCN
<b>Purification Method</b>	Purified from goat serum by ammonium sulphate precipitation followed by antigen affinity chromatography using the immunizing peptide.
<b>Shipping Instructions</b>	Refrigerated
<b>Predicted Species</b>	Human, Mouse, Rat, Dog, Cow, Zebrafish
<b>Reactive Species</b>	Human, Mouse, Rat
<b>Human Gene ID</b>	9844
<b>Mouse Gene ID</b>	140580
<b>Product Grade</b>	<a href="https://prod-vector-labs-pimcore-assets.s3.us-east-1.amazonaws.com/assets/products/image/elite_medium.png">https://prod-vector-labs-pimcore-assets.s3.us-east-1.amazonaws.com/assets/products/image/elite_medium.png</a>
<b>ELISA Detection Limit</b>	Antibody detection limit dilution 1:128000.
<b>Western Blot</b>	Approx 83kDa band observed in Human Brain (Frontal Cortex) lysates, in Mouse and Rat Brain lysates and in lysates of cell line Jurkat (calculated MW of 83.8kDa according to NP_055615.8). Recommended concentration: 0.1-0.3µg/ml. Primary incubation was 1 hour.
<b>Application Type</b>	Pep-ELISA, WB

## SELECTED REFERENCES

[{"pmid": 25586182, "intro": "**This antibody (previous batch) has been successfully used in Western blot in Human:**", "title":

"The bipartite rac1 Guanine nucleotide exchange factor engulfment and cell motility 1/dedicator of cytokinesis 180 (elmo1/dock180) protects endothelial cells from apoptosis in blood vessel development.", "author": "Schäker K, Bartsch S, Patry C, Stoll SJ, Hillebrands JL, Wieland T, Kroll J.", "journal": "J Biol Chem. 2015 Mar 6;290(10):6408"}, {"pmid": 27849017, "intro": "**This**

**antibody (previous batch) has been successfully used in Western blot in Zebrafish:**", "title":

"ELMO1 protects renal structure and ultrafiltration in kidney development and under diabetic conditions.", "author": "Krishna Rakesh Sharma, Karl Heckler, Sandra J. Stoll, Jan-Luuk Hillebrands, Katharina Kynast, Esther Herpel, Stefan Porubsky, Marlies Elger, Boris Hadaschik, Karen Bieback, Hans-Peter Hammes, Peter P. Nawroth, and Jens Kroll", "journal": "Sci Rep. 2016 Nov 16;6:37172"}, {"pmid": 20466982, "intro": "**This antibody (previous batch) has been successfully used in Western blot and IP in Zebrafish:**", "title": "The Rac1 regulator ELMO1 controls vascular morphogenesis in zebrafish.", "author": "Epting D, Wendik B, Bennewitz K, Dietz CT, Driever W, Kroll J.", "journal": "Circ Res. 2010 Jul 9;107(1):45-55."}]

## DOCUMENTS

- [Data Sheet](#)

## GALLERY IMAGES

