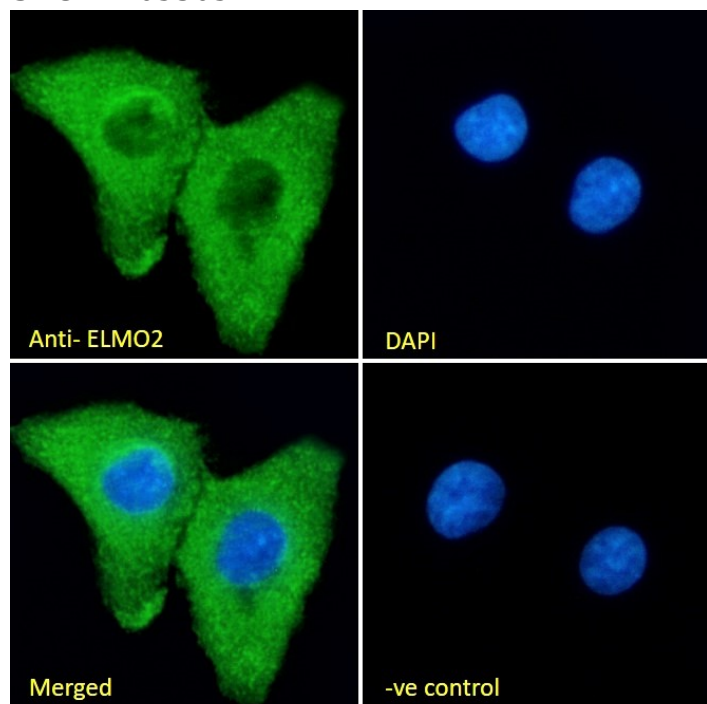


GOAT ANTI-ELMO2 ANTIBODY

SKU: EB05305



SPECIFICATIONS

Formulation	Supplied at 0.5 mg/ml in Tris saline, 0.02% sodium azide, pH7.3 with 0.5% bovine serum albumin.
Unit Size	100 µg
Storage Instructions	Aliquot and store at -20°C. Minimize freezing and thawing.
Synonym / Alias Names	ELMO-2 CED-12 RP11-394O2.2 engulfment and cell motility 2 engulfment and cell motility 2 PH domain protein CED12A ced-12 homolog 2 KIAA1834 FLJ11656 CED12 engulfment and cell motility 2 (ced-12 homolog, C. elegans) ELMO2
Usage Summary	<p>Immunofluorescence: Strong expression of the protein seen in A549 and U2OS cells.</p> <p>Flow Cytometry: Flow cytometric analysis of A549 cells. Recommended concentration: 10ug/ml.</p>
Accession ID	NP_877496.1; NP_573403.1; NP_001305182.1
Blocking Peptide	EBP05305

Immunogen	Peptide with sequence C-PKEPSSYDFVYHYG, from the C Terminus of the protein sequence according to NP_877496.1; NP_573403.1; NP_001305182.1.
Peptide Sequence	C-PKEPSSYDFVYHYG
Purification Method	Purified from goat serum by ammonium sulphate precipitation followed by antigen affinity chromatography using the immunizing peptide.
Shipping Instructions	Refrigerated
Predicted Species	Human, Mouse, Rat, Dog, Pig, Cow
Reactive Species	Human, Mouse, Rat
Human Gene ID	63916
Mouse Gene ID	140579
Product Grade	https://prod-vector-labs-pimcore-assets.s3.us-east-1.amazonaws.com/assets/products/image/elite_plus_medium.png
IHC Results	In paraffin embedded Human Prostate shows pixulated staining in the cytoplasm of stroma cells. Recommended concentration: 3-6µg/ml.
ELISA Detection Limit	Antibody detection limit dilution 1:32000.
Western Blot	Approx 80kDa band observed in lysates of cell lines HEK293, Jurkat, RAW264.7 and in Human Cerebellum and Rat Brain lysates (calculated MW of 82.6kDa according to Human NP_573403.1 and NP_877496.1 and Mouse NP_525026.2, and 83.7kDa according tp Rat NP_001128427.1). Recommended concentration: 0.3-1ug/ml.
Application Type	Pep-ELISA, WB, IHC, IF, FC

DOCUMENTS

- [Data Sheet](#)

GALLERY IMAGES

