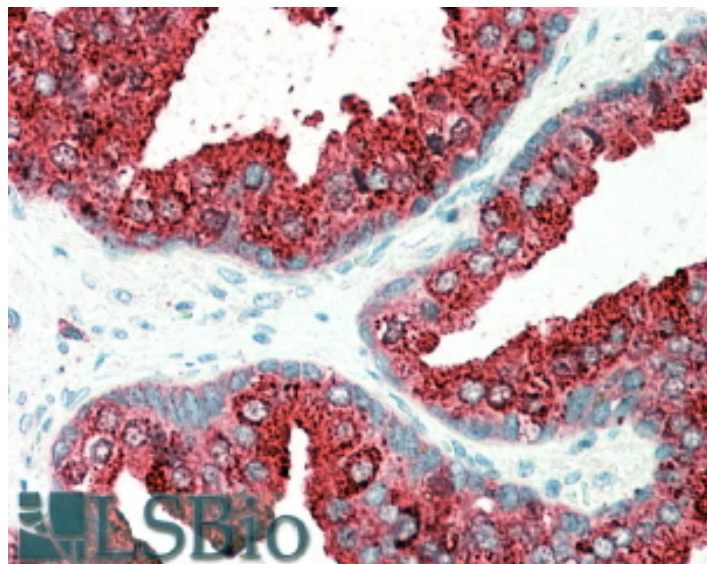


# GOAT ANTI-ELMO3 ANTIBODY

**SKU:** EB05295



## SPECIFICATIONS

|                              |  |
|------------------------------|--|
| <b>Formulation</b>           | Supplied at 0.5 mg/ml in Tris saline, 0.02% sodium azide, pH7.3 with 0.5% bovine serum albumin.  |
| <b>Unit Size</b>             | 100 µg   |
| <b>Storage Instructions</b>  | Aliquot and store at -20°C. Minimize freezing and thawing.   |
| <b>Synonym / Alias Names</b> | ELMO-3 CED-12 engulfment and cell motility 3 ced-12 homolog 3 FLJ13824 CED12 engulfment and cell motility 3 (ced-12 homolog, C. elegans) ELMO3 |
| <b>Usage Summary</b>         | <strong>Flow Cytometry:</strong> Flow cytometric analysis of A431 cells. Recommended concentration: 10ug/ml.                                   |
| <b>Accession ID</b>          | NP_078988.3  |
| <b>Blocking Peptide</b>      | EBP05295   |
| <b>Immunogen</b>             | Peptide with sequence TNFNFCYDCSIAEP, from the C Terminus of the protein sequence according to NP_078988.3.                                    |
| <b>Peptide Sequence</b>      | TNFNFCYDCSIAEP   |
| <b>Purification Method</b>   | Purified from goat serum by ammonium sulphate precipitation followed by antigen affinity chromatography using the immunizing peptide.          |
| <b>Shipping Instructions</b> | Refrigerated   |

|                              |   |
|------------------------------|---|
| <b>Predicted Species</b>     | Human   |
| <b>Reactive Species</b>      | Human   |
| <b>Human Gene ID</b>         | 79767   |
| <b>Product Grade</b>         | <a href="https://prod-vector-labs-pimcore-assets.s3.us-east-1.amazonaws.com/assets/products/image/elite_plus_medium.png">https://prod-vector-labs-pimcore-assets.s3.us-east-1.amazonaws.com/assets/products/image/elite_plus_medium.png</a> |
| <b>IHC Results</b>           | In paraffin embedded Human Prostate shows vesiculate staining in the cytoplasm of secretory cells. Recommended concentration, 5-10µg/ml.  |
| <b>ELISA Detection Limit</b> | Antibody detection limit dilution 1:16000.  |
| <b>Western Blot</b>          | Approx. 75kDa band observed in lysates of cell line A431 and in Human Tonsil lysates (calculated MW of 70.0kDa according to NP_078988.2). Recommended concentration: 0.1-0.3µg/ml. Primary incubation 1 hour at room temperature.           |
| <b>Application Type</b>      | Pep-ELISA, WB, IHC, FC  |

## DOCUMENTS

- [Data Sheet](#)

## GALLERY IMAGES

