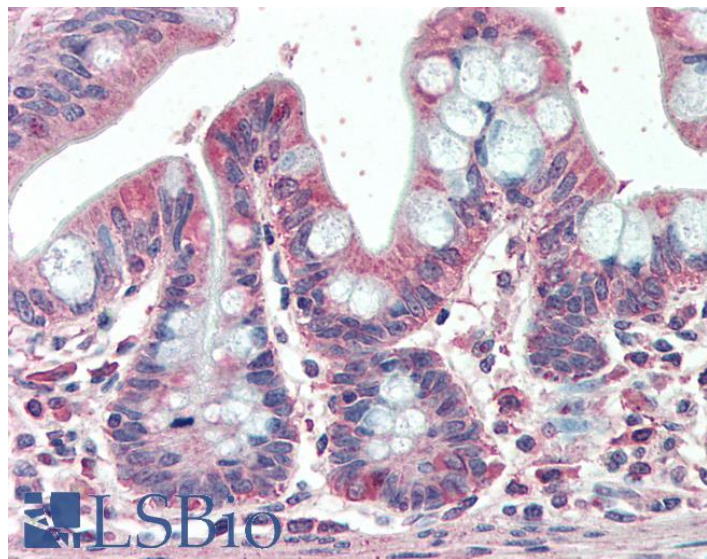


GOAT ANTI-EML5 ANTIBODY

SKU: EB09676



SPECIFICATIONS

Formulation Supplied at 0.5 mg/ml in Tris saline, 0.02% sodium azide, pH7.3 with 0.5% bovine serum albumin.

Unit Size 100 µg

Storage Instructions Aliquot and store at -20°C. Minimize freezing and thawing.

Synonym /

Alias Names HuEMAP-2|EMAP-2|DKFZp781D1122|echinoderm microtubule associated protein like 5|EML5

Accession ID NP_899243.1

Blocking Peptide EBP09676

Immunogen Peptide with sequence C-QQKEPSIDERQG, from the internal region of the protein sequence according to NP_899243.1.

Peptide Sequence C-QQKEPSIDERQG

Purification Method Purified from goat serum by ammonium sulphate precipitation followed by antigen affinity chromatography using the immunizing peptide.

Shipping Instructions Refrigerated

Predicted Species	Human, Mouse, Rat, Dog, Cow
Reactive Species	Human
Human Gene ID	161436
Mouse Gene ID	319670
Rat Gene ID	444982
Product Grade	https://prod-vector-labs-pimcore-assets.s3.us-east-1.amazonaws.com/assets/products/image/elite_medium.png
IHC Results	Paraffin embedded Human Small Intestine. Recommended concentration: 5µg/ml.
ELISA	
Detection Limit	Antibody detection limit dilution 1:32000.
Western Blot	Preliminary experiments in Human Brain (Cerebellum, Cerebral Cortex and Hippocampus) lysates gave no specific signal but low background (at antibody concentration up to 1µg/ml).
Application Type	Pep-ELISA, IHC

DOCUMENTS

- [Data Sheet](#)

GALLERY IMAGES

