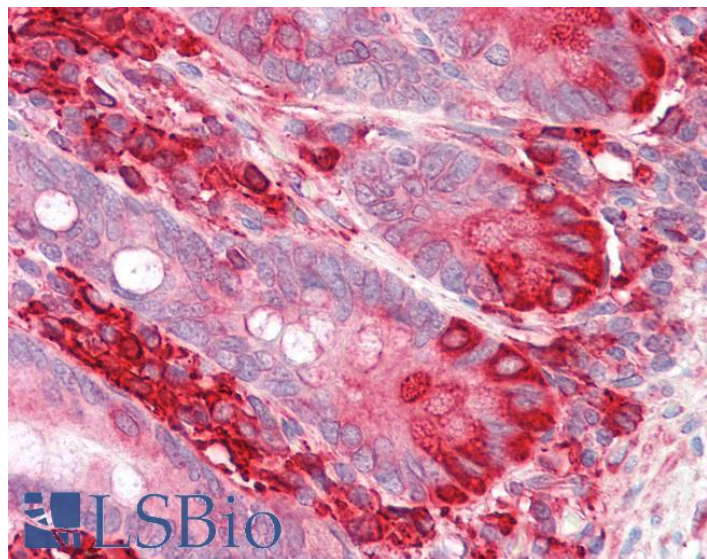


# GOAT ANTI-ENDOPDI / TXNDC5 ANTIBODY

**SKU:** EB06471



## SPECIFICATIONS

<b>Formulation</b>	Supplied at 0.5 mg/ml in Tris saline, 0.02% sodium azide, pH7.3 with 0.5% bovine serum albumin.
<b>Unit Size</b>	100 µg
<b>Storage Instructions</b>	Aliquot and store at -20°C. Minimize freezing and thawing.
<b>Synonym / Alias Names</b>	thioredoxin domain containing 5 protein disulfide isomerase family A, member 15 endothelial protein disulphide isomerase PDIA15 Hcc-2 thioredoxin domain containing 5 (endoplasmic reticulum) TXNDC5 endothelial protein disulphide isomerase thioredoxin related protein FLJ90810 FLJ21353 MGC3178 UNQ364 ERP46 thioredoxin domain containing 5 EndoPDI
<b>Usage Summary</b>	<strong>Immunofluorescence:</strong> Strong expression of the protein seen in the endoplasmic reticulum of U2OS and HeLa cells. Recommended concentration: 10µg/ml. <strong>Flow Cytometry:</strong> Flow cytometric analysis of HeLa cells. Recommended concentration: 10ug/ml.
<b>Accession ID</b>	NP_110437.2; NP_001139021.1
<b>Blocking Peptide</b>	EBP06471
<b>Immunogen</b>	Peptide with sequence C-SLHRFVLSQAKDEL, from the C Terminus of the protein sequence according to NP_110437.2; NP_001139021.1.
<b>Product Comments</b>	This antibody is expected to be able to recognise both reported human isoforms, as represented by NP_110437.2; NP_001139021.1.

<b>Peptide Sequence</b>	C-SLHRFVLSQAKDEL
<b>Purification Method</b>	Purified from goat serum by ammonium sulphate precipitation followed by antigen affinity chromatography using the immunizing peptide.
<b>Shipping Instructions</b>	Refrigerated
<b>Predicted Species</b>	Human
<b>Reactive Species</b>	Human
<b>Human Gene ID</b>	81567
<b>Product Grade</b>	<a href="https://prod-vector-labs-pimcore-assets.s3.us-east-1.amazonaws.com/assets/products/image/elite_plus_medium.png">https://prod-vector-labs-pimcore-assets.s3.us-east-1.amazonaws.com/assets/products/image/elite_plus_medium.png</a>
<b>IHC Results</b>	Paraffin embedded Human Small Intestine. Recommended concentration: 3.75µg/ml.
<b>ELISA Detection Limit</b>	Antibody detection limit dilution 1:64000.
<b>Western Blot</b>	Approx 50kDa band observed in lysates of cell lines HEK293, A549, HeLa and HepG2 (calculated MW of 47.6kDa according to NP_110437.2). This molecular weight is routinely observed by other sources. Recommended concentration: 0.01-0.1µg/ml. Primary incubation 1 hour at room temperature.
<b>Application Type</b>	Pep-ELISA, WB, IHC, IF, FC

## DOCUMENTS

- [Data Sheet](#)

## GALLERY IMAGES

