



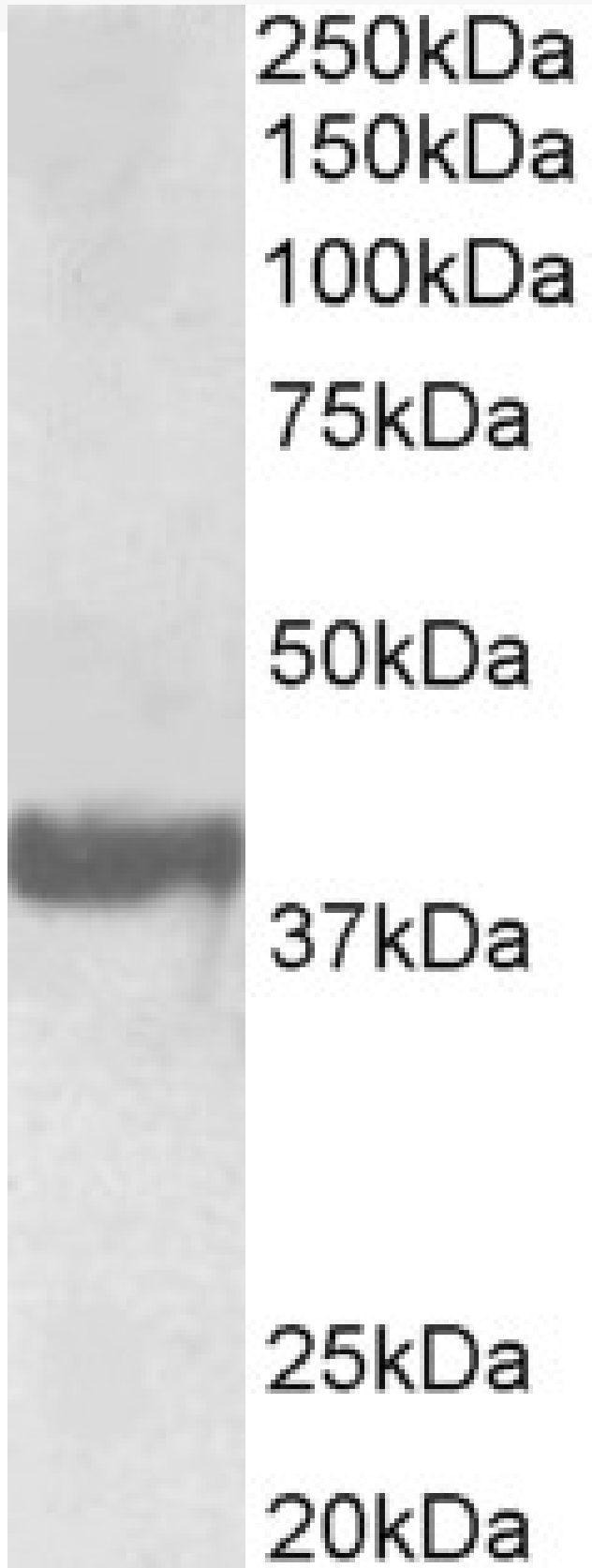
www.everestbiotech.com

Email: customerservice@vectorlabs.com

Telephone: [\(650\) 697-3600](tel:(650)697-3600)

GOAT ANTI-ENDOPHILIN-A1 / SH3GL2, BIOTINYLATED ANTIBODY

SKU: EB11694-B





SPECIFICATIONS

Formulation	Supplied at 0.5 mg/ml in Tris saline, 0.02% sodium azide, pH7.3 with 0.5% bovine serum albumin.
Unit Size	100 µg
Storage Instructions	Aliquot and store at -20°C. Minimize freezing and thawing.
Synonym / Alias Names	SH3GL2 SH3 domain containing GRB2 like 2 CNSA2 EEN-B1 SH3D2A SH3P4 Endophilin A1 BAR domain SH3 domain protein 2A SH3 domain-containing GRB2-like protein 2 SH3-domain GRB2-like 2 bA335L15.1 (SH3-domain GRB2-like 2) endophilin-1
Accession ID	NP_003017.1
Blocking Peptide	EBP11694-B
Immunogen	Peptide with sequence CSLEFPTGDSTQPN., from the internal region of the protein sequence according to NP_003017.1.
Peptide Sequence	CSLEFPTGDSTQPN.
Purification Method	Purified from goat serum by ammonium sulphate precipitation followed by antigen affinity chromatography using the immunizing peptide.
Shipping Instructions	Refrigerated
Predicted Species	Human, Pig
Reactive Species	Human
Human Gene ID	6456
Product Grade	https://prod-vector-labs-pimcore-assets.s3.us-east-1.amazonaws.com/assets/products/image/elite_medium.png
ELISA Detection Limit	Antibody detection limit dilution 1:64000.
Western Blot	Approx 38kDa band observed in Human Brain (Frontal Cortex) lysates (calculated MW of 40.0kDa according to NP_003017.1). Recommended concentration: 0.3-1µg/ml. See non-biotinylated parental product's datasheet for further QC data
Application Type	Pep-ELISA, WB

DOCUMENTS

- [Data Sheet](#)



GALLERY IMAGES

