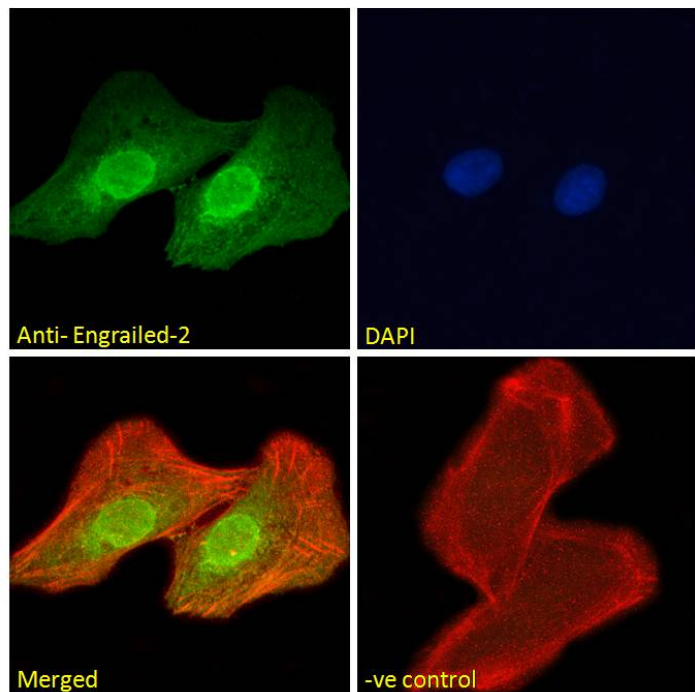


GOAT ANTI-ENGRAILED-2 ANTIBODY

SKU: EB07120



SPECIFICATIONS

Formulation Supplied at 0.5 mg/ml in Tris saline, 0.02% sodium azide, pH7.3 with 0.5% bovine serum albumin.

Unit Size 100 µg

Storage Instructions Aliquot and store at -20°C. Minimize freezing and thawing.

Synonym /

Alias AUTS1|EN2|engrailed homolog 2|Engrailed-2

Names

Usage **Immunofluorescence:** Strong expression of the protein seen in the nuclei of HEK293 and U2OS cells. Recommended concentration: 10µg/ml.

Accession ID NP_001418.2

Blocking Peptide EBP07120

Immunogen Peptide with sequence C-NHSTTAKEGKSDSE, from the C Terminus of the protein sequence according to NP_001418.2.

Peptide Sequence	C-NHSTTAKEGKSDSE
Purification Method	Purified from goat serum by ammonium sulphate precipitation followed by antigen affinity chromatography using the immunizing peptide.
Shipping Instructions	Refrigerated
Predicted Species	Human, Mouse, Rat, Dog
Reactive Species	Human, Mouse
Human Gene ID	2020
Product Grade	https://prod-vector-labs-pimcore-assets.s3.us-east-1.amazonaws.com/assets/products/image/elite_medium.png
ELISA Detection Limit	Antibody detection limit dilution 1:4000.
Western Blot	Approx 35kDa band observed in Mouse Brain lysates (calculated MW of f 33.8kDa according to Mouse NP_034264.1). Recommended concentration: 0.1-1µg/ml. Primary incubation 1 hour at room temperature.
Application Type	Pep-ELISA, WB, IF

DOCUMENTS

- [Data Sheet](#)

GALLERY IMAGES

