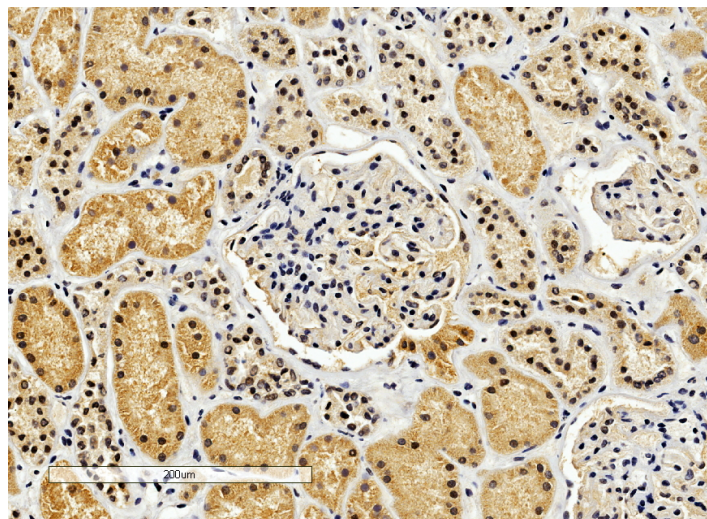


GOAT ANTI-ENOX2 / APK1 ANTIBODY

SKU: EB07995



SPECIFICATIONS

Formulation Supplied at 0.5 mg/ml in Tris saline, 0.02% sodium azide, pH7.3 with 0.5% bovine serum albumin.

Unit Size 100 µg

Storage Instructions Aliquot and store at -20°C. Minimize freezing and thawing.

Synonym / Alias Names cytosolic ovarian carcinoma antigen 1|APK1 antigen|tNOX|COVA1|APK1|RP5-875H3.1|ecto-NOX disulfide-thiol exchanger 2

Accession ID NP_006366.2; NP_872114.1

Blocking Peptide EBP07995

Immunogen Peptide with sequence C-EKLKDDKLQVEK, from the internal region of the protein sequence according to NP_006366.2; NP_872114.1.

Product Comments This antibody is expected to recognise both reported isoforms (NP_006366.2; NP_872114.1).

Peptide Sequence C-EKLKDDKLQVEK

Purification Method Purified from goat serum by ammonium sulphate precipitation followed by antigen affinity chromatography using the immunizing peptide.

Shipping Instructions	Refrigerated
Predicted Species	Human, Dog
Reactive Species	Human
Human Gene ID	10495
Product Grade	https://prod-vector-labs-pimcore-assets.s3.us-east-1.amazonaws.com/assets/products/image/elite_medium.png
IHC Results	In paraffin embedded Human Kidney shows cytoplasm staining preferentially in PC. Recommended concentration, 2-4µg/ml.
ELISA	
Detection Limit	Antibody detection limit dilution 1:64000.
Application Type	Pep-ELISA, IHC

DOCUMENTS

- [Data Sheet](#)

GALLERY IMAGES

