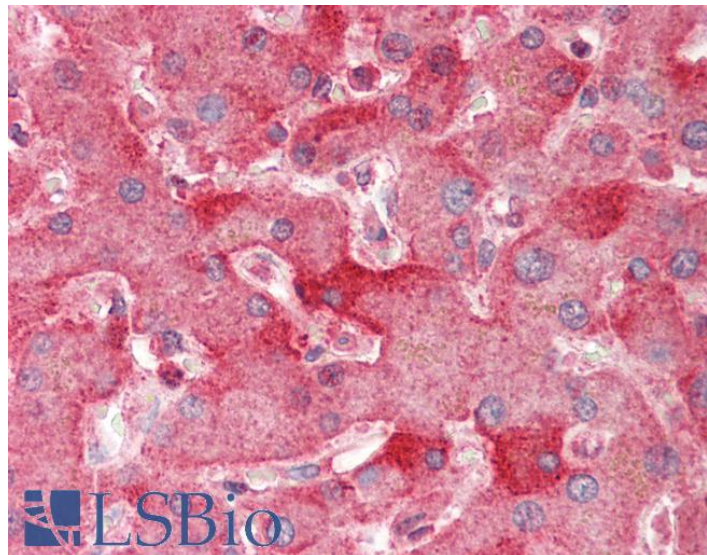


GOAT ANTI-ENPP2 / AUTOTAXIN (AA698-712) ANTIBODY

SKU: EB12236



SPECIFICATIONS

Formulation Supplied at 0.5 mg/ml in Tris saline, 0.02% sodium azide, pH7.3 with 0.5% bovine serum albumin.

Unit Size 100 µg

Storage Instructions Aliquot and store at -20°C. Minimize freezing and thawing.

Synonym / Alias Names phosphodiesterase|extracellular lysophospholipase D|ectonucleotide pyrophosphatase/phosphodiesterase family member 2|autotaxin-t|E-NPP 2|PDNP2|PD-IALPHA|NPP2|LysoPLD|AUTOTAXIN|ATX-X|ATX|ectonucleotide pyrophosphatase/phosphodiesterase 2|ENPP2

Accession ID NP_006200.3; NP_001035181.1, NP_001124335.1

Blocking Peptide EBP12236

Immunogen Peptide with sequence PDHLTSCVRPDVRVS, from the internal region of the protein sequence according to NP_006200.3; NP_001035181.1, NP_001124335.1.

Product Comments This antibody is expected to recognize all reported isoforms (NP_006200.3; NP_001035181.1, NP_001124335.1).

Peptide Sequence PDHLTSCVRPDVRVS

Purification Method	Purified from goat serum by ammonium sulphate precipitation followed by antigen affinity chromatography using the immunizing peptide.
Shipping Instructions	Refrigerated
Predicted Species	Human
Reactive Species	Human
Human Gene ID	5168
Product Grade	https://prod-vector-labs-pimcore-assets.s3.us-east-1.amazonaws.com/assets/products/image/elite_medium.png
IHC Results	Paraffin embedded Human Liver and Brain (Cortex). Recommended concentration: 5µg/ml.
ELISA Detection Limit	Antibody detection limit dilution 1:128000.
Western Blot	Approx 100kDa band observed in Human Placenta lysates (calculated MW of 105kDa according to NP_006200.3). Recommended concentration: 0.3-1µg/ml. Primary incubation was 1 hour.
Application Type	Pep-ELISA, WB, IHC

DOCUMENTS

- [Data Sheet](#)

GALLERY IMAGES

