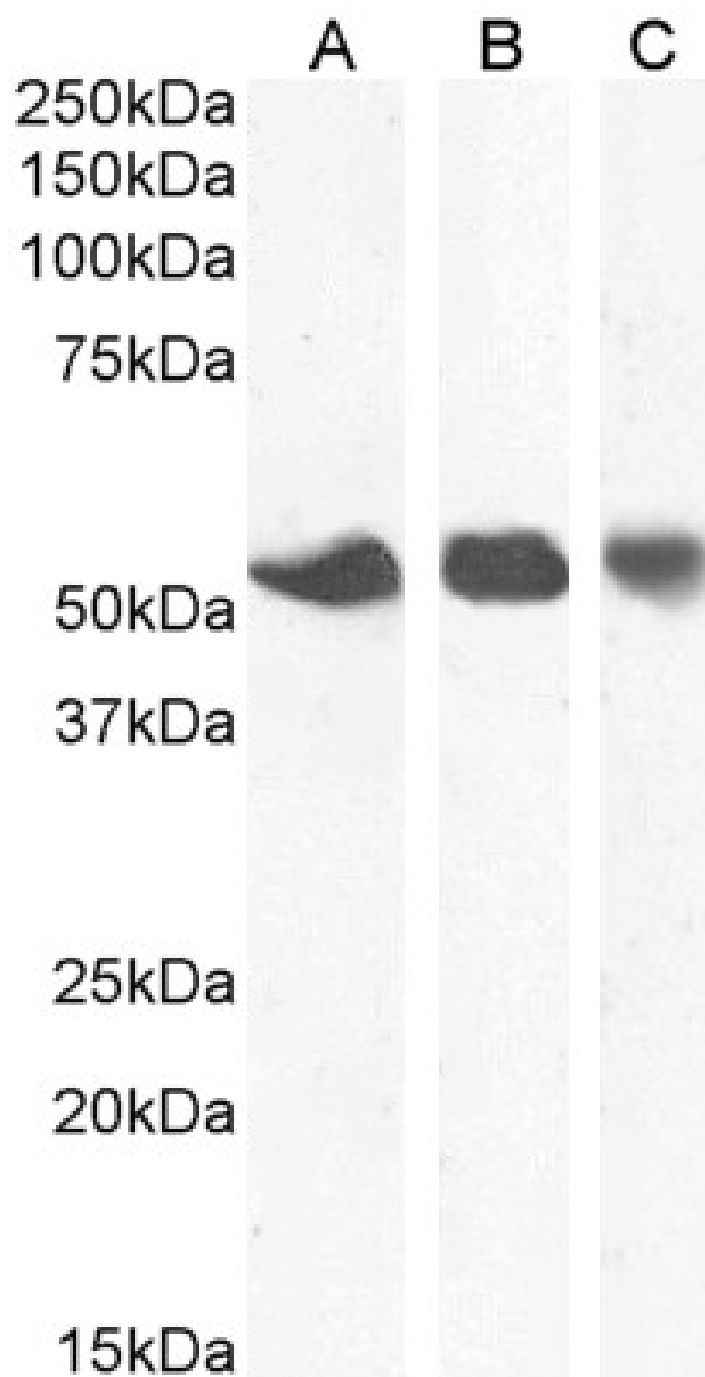


## GOAT ANTI-ENT1 ANTIBODY

SKU: EB08973



## SPECIFICATIONS

<b>Formulation</b>	Supplied at 0.5 mg/ml in Tris saline, 0.02% sodium azide, pH7.3 with 0.5% bovine serum albumin.
<b>Unit Size</b>	100 µg
<b>Storage</b>	Aliquot and store at -20°C. Minimize freezing and thawing.
<b>Instructions</b>	
<b>Synonym / Alias</b>	solute carrier family 29, member 1 nucleoside transporter, es-type equilibrative nucleoside transporter 1 equilibrative nitrobenzylmercaptapurine riboside (NBMPR)-sensitive nucleoside transporter MGC3778 MGC1465 ENT1 solute carrier family 29 (nucleoside transporters), member 1 SLC29A1
<b>Names</b>	
<b>Accession ID</b>	NP_001071643.1
<b>Blocking Peptide</b>	EBP08973
<b>Immunogen</b>	Peptide with sequence TSHQPQDRYKAVW-C, from the N Terminus of the protein sequence according to NP_001071643.1.
<b>Product Comments</b>	Reported variants represent identical protein: NP_001071642.1, NP_001071645.1, NP_001071644.1, NP_004946.1, NP_001071643.1
<b>Peptide Sequence</b>	TSHQPQDRYKAVW-C
<b>Purification Method</b>	Purified from goat serum by ammonium sulphate precipitation followed by antigen affinity chromatography using the immunizing peptide.
<b>Shipping Instructions</b>	Refrigerated
<b>Predicted Species</b>	Human, Mouse, Rat, Dog, Cow
<b>Reactive Species</b>	Human
<b>Human Gene ID</b>	2030
<b>Product Grade</b>	<a href="https://prod-vector-labs-pimcore-assets.s3.us-east-1.amazonaws.com/assets/products/image/elite_medium.png">https://prod-vector-labs-pimcore-assets.s3.us-east-1.amazonaws.com/assets/products/image/elite_medium.png</a>
<b>ELISA Detection Limit</b>	Antibody detection limit dilution 1:4000.
<b>Western Blot</b>	Approx 50-55kDa band observed in Human Placenta, Spleen and Breast lysates (calculated MW of 50.2kDa according to NP_001071643.1). Recommended concentration: 0.3-1µg/ml. Primary incubation 1 hour at room temperature.
<b>Application Type</b>	Pep-ELISA, WB

## DOCUMENTS

- [Data Sheet](#)

## GALLERY IMAGES

