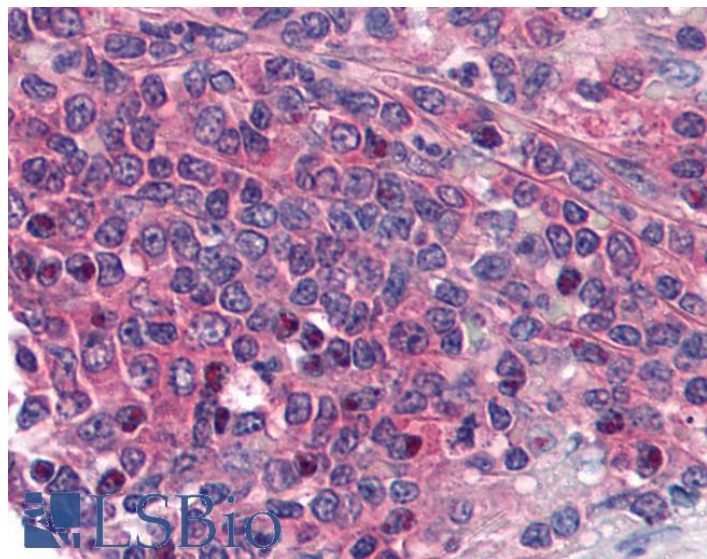


# GOAT ANTI-EP1 RECEPTOR / PTGER1 ANTIBODY

**SKU:** EB07144



## SPECIFICATIONS

**Formulation** Supplied at 0.5 mg/ml in Tris saline, 0.02% sodium azide, pH7.3 with 0.5% bovine serum albumin.

**Unit Size** 100 µg

**Storage Instructions** Aliquot and store at -20°C. Minimize freezing and thawing.

**Synonym / Alias Names** PTGER1|prostaglandin E receptor 1 (subtype EP1), 42kDa|EP1|PGE receptor, EP1 subtype|prostaglandin E receptor 1, subtype EP1|prostanoid EP1 receptor

**Accession ID** NP\_000946.2

**Blocking Peptide** EBP07144

**Immunogen** Peptide with sequence C-DSRRRWGAHGPRS, from the internal region of the protein sequence according to NP\_000946.2.

**Peptide Sequence** C-DSRRRWGAHGPRS

**Purification Method** Purified from goat serum by ammonium sulphate precipitation followed by antigen affinity chromatography using the immunizing peptide.

**Shipping Instructions** Refrigerated

<b>Predicted Species</b>	Human
<b>Reactive Species</b>	Human
<b>Human Gene ID</b>	5731
<b>Product Grade</b>	<a href="https://prod-vector-labs-pimcore-assets.s3.us-east-1.amazonaws.com/assets/products/image/elite_medium.png">https://prod-vector-labs-pimcore-assets.s3.us-east-1.amazonaws.com/assets/products/image/elite_medium.png</a>
<b>IHC Results</b>	In paraffin embedded Human Kidney shows membranous staining in the epithelial cells of DCT. Recommended concentration: 1-2µg/ml. Paraffin embedded Human Spleen. Recommended concentration: 5µg/ml.
<b>ELISA</b>	
<b>Detection Limit</b>	Antibody detection limit dilution 1:128000.
<b>Application Type</b>	Pep-ELISA, IHC

## DOCUMENTS

- [Data Sheet](#)

## GALLERY IMAGES

