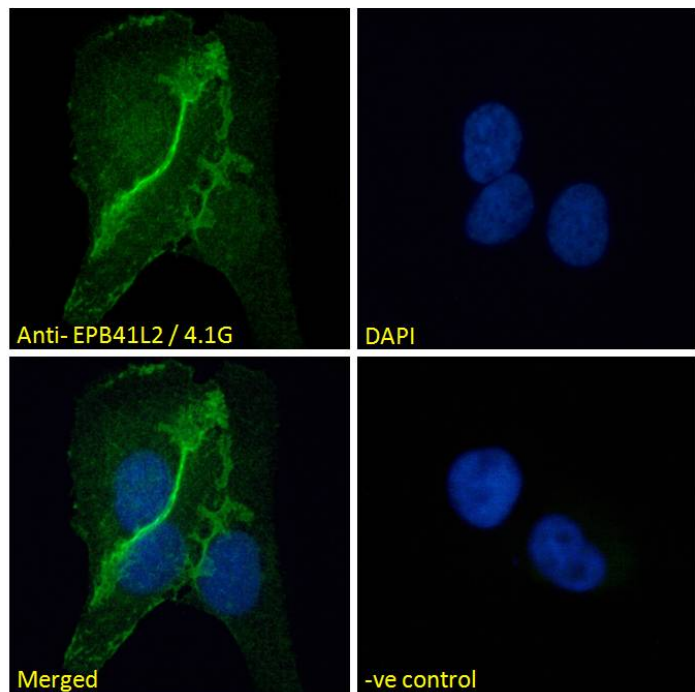


# GOAT ANTI-EPB41L2 / 4.1G (AA 593 TO 604) ANTIBODY

SKU: EB08135



## SPECIFICATIONS

**Formulation** Supplied at 0.5 mg/ml in Tris saline, 0.02% sodium azide, pH7.3 with 0.5% bovine serum albumin.

**Unit Size** 100 µg

**Storage Instructions** Aliquot and store at -20°C. Minimize freezing and thawing.

**Synonym /** erythrocyte membrane protein band 4.1 like-protein

**Alias** 2|OTTHUMP00000040262|DKFZp781H1755|DKFZp781D1972|RP3-324N14.1|erythrocyte membrane protein band

**Names** 4.1-like 2|4.1-G|EPB41L2

**Usage Summary** **Immunofluorescence:** Strong expression of the protein seen in the membranes of A431 and in the cell junctions of U2OS cells. Recommended concentration: 10µg/ml. **Flow Cytometry:** Flow cytometric analysis of A431 cells. Recommended concentration: 10ug/ml.

**Accession ID** NP\_001422.1; NP\_001129026.1; NP\_001186317.1; NP\_001239589.1; NP\_001337228.1; NP\_001337230.1; NP\_001337232.1; NP\_001337233.1; NP\_001337236.1; NP\_001337243.1; NP\_001337249.1

**Blocking Peptide** EBP08135

<b>Immunogen</b>	Peptide with sequence C-RREVRSPKAPH, from the internal region of the protein sequence according to NP_001422.1; NP_001129026.1; NP_001186317.1; NP_001239589.1; NP_001337228.1; NP_001337230.1; NP_001337232.1; NP_001337233.1; NP_001337236.1; NP_001337243.1; NP_001337249.1.
<b>Product Comments</b>	This antibody is reported to recognise all isoforms NP_001422.1 (iso a), NP_001129026.1 (iso b), NP_001186317.1 (iso c), NP_001239589.1 (iso d), NP_001337228.1 (iso e), NP_001337230.1 (iso f), NP_001337232.1 (iso g), NP_001337233.1 (iso h), NP_001337236.1 (iso i), NP_001337243.1 (iso j), NP_001337249.1 (iso k).
<b>Peptide Sequence</b>	C-RREVRSPKAPH
<b>Purification Method</b>	Purified from goat serum by ammonium sulphate precipitation followed by antigen affinity chromatography using the immunizing peptide.
<b>Shipping Instructions</b>	Refrigerated
<b>Predicted Species</b>	Human
<b>Reactive Species</b>	Human
<b>Human Gene ID</b>	2037
<b>Product Grade</b>	<a href="https://prod-vector-labs-pimcore-assets.s3.us-east-1.amazonaws.com/assets/products/image/elite_plus_medium.png">https://prod-vector-labs-pimcore-assets.s3.us-east-1.amazonaws.com/assets/products/image/elite_plus_medium.png</a>
<b>IHC Results</b>	Paraffin embedded Human Uterus and Colon. Recommended concentration: 2.5µg/ml.
<b>ELISA Detection Limit</b>	Antibody detection limit dilution 1:32000.
<b>Western Blot</b>	Preliminary testing showed bands at approx 110+40kDa in Human Cerebellum lysates after 0.1µg/ml antibody staining (calculated MW of 113kDa according to NP_001422.1). These bands were successfully blocked by incubation with the immunizing peptide. Primary incubation 1 hour at room temperature.
<b>Application Type</b>	Pep-ELISA, IF, IHC, FC

## DOCUMENTS

- [Data Sheet](#)

## GALLERY IMAGES

