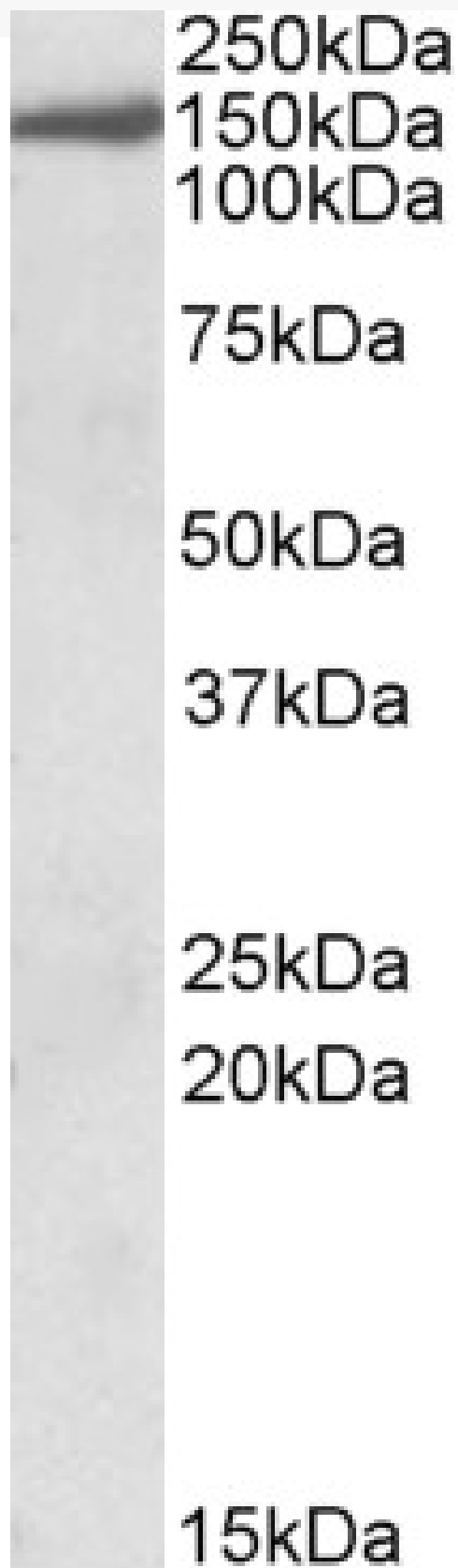


# GOAT ANTI-EPB41L3 / DAL1 ANTIBODY

**SKU:** EB07024



## SPECIFICATIONS

|                              |   |
|------------------------------|---|
| <b>Formulation</b>           | Supplied at 0.5 mg/ml in Tris saline, 0.02% sodium azide, pH7.3 with 0.5% bovine serum albumin.   |
| <b>Unit Size</b>             | 100 µg  |
| <b>Storage Instructions</b>  | Aliquot and store at -20°C. Minimize freezing and thawing.  |
| <b>Synonym / Alias Names</b> | FLJ37633 differentially expressed in adenocarcinoma of the lung KIAA0987 DAL-1 4.1B HGNC:3380 erythrocyte membrane protein band 4.1-like 3 DAL1 EPB41L3   |
| <b>Accession ID</b>          | NP_036439.2   |
| <b>Blocking Peptide</b>      | EBP07024  |
| <b>Immunogen</b>             | Peptide with sequence C-HKETEITPEDGED, from the C Terminus of the protein sequence according to NP_036439.2.  |
| <b>Peptide Sequence</b>      | C-HKETEITPEDGED   |
| <b>Purification Method</b>   | Purified from goat serum by ammonium sulphate precipitation followed by antigen affinity chromatography using the immunizing peptide.   |
| <b>Shipping Instructions</b> | Refrigerated  |
| <b>Predicted Species</b>     | Human, Mouse, Rat, Dog  |
| <b>Reactive Species</b>      | Human   |
| <b>Human Gene ID</b>         | 23136   |
| <b>Product Grade</b>         | <a href="https://prod-vector-labs-pimcore-assets.s3.us-east-1.amazonaws.com/assets/products/image/elite_medium.png">https://prod-vector-labs-pimcore-assets.s3.us-east-1.amazonaws.com/assets/products/image/elite_medium.png</a> |
| <b>ELISA Detection Limit</b> | Antibody detection limit dilution 1:2000.   |
| <b>Western Blot</b>          | Approx 150kDa band observed in Human Brain (Cerebellum), Mouse Brain and Rat Brain lysates (calculated MW of 121kDa according to NP_036439.2). Recommended concentration: 0.3-1µg/ml. Primary incubation was 1 hour.              |
| <b>Application Type</b>      | Pep-ELISA, WB   |

## DOCUMENTS

- [Data Sheet](#)

## GALLERY IMAGES

