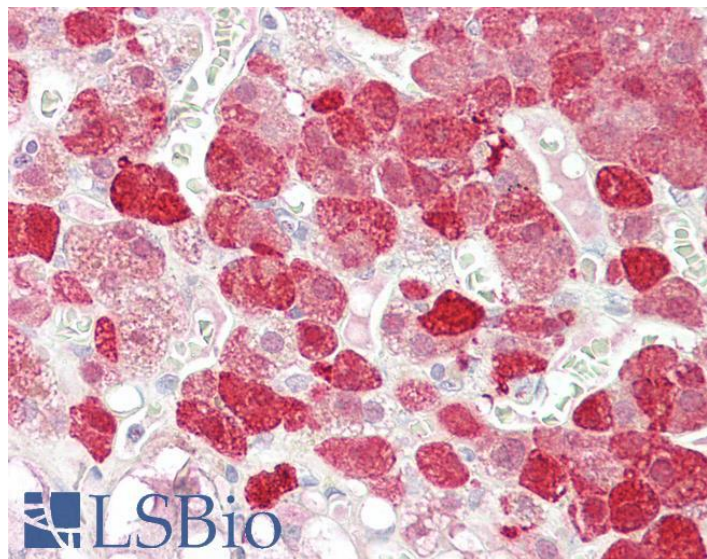


GOAT ANTI-EPB41L4B / EHM2 ANTIBODY

SKU: EB08136



SPECIFICATIONS

Formulation	Supplied at 0.5 mg/ml in Tris saline, 0.02% sodium azide, pH7.3 with 0.5% bovine serum albumin.
Unit Size	100 µg
Storage Instructions	Aliquot and store at -20°C. Minimize freezing and thawing.
Synonym / Alias Names	FERM-containing protein EHM2 FLJ21596 EHM2 DKFZp761N1814 CG1 erythrocyte membrane protein band 4.1 like 4B EPB41L4B
Accession ID	NP_060894.2; NP_061987.3
Blocking Peptide	EBP08136
Immunogen	Peptide with sequence C-HNYQPQYHPNIHPSQ, from the internal region of the protein sequence according to NP_060894.2; NP_061987.3.
Product Comments	This antibody is expected to recognise both reported isoforms (NP_060894.2; NP_061987.3).
Peptide Sequence	C-HNYQPQYHPNIHPSQ
Purification Method	Purified from goat serum by ammonium sulphate precipitation followed by antigen affinity chromatography using the immunizing peptide.

Shipping Instructions	Refrigerated
Predicted Species	Human
Reactive Species	Human
Human Gene ID	54566
Product Grade	https://prod-vector-labs-pimcore-assets.s3.us-east-1.amazonaws.com/assets/products/image/elite_medium.png
IHC Results	Paraffin embedded Human Adrenal Gland. Recommended concentration: 3.75µg/ml.
ELISA	
Detection Limit	Antibody detection limit dilution 1:64000.
Western Blot	Preliminary experiments gave an approx 48kDa band in Human Brain (Hippocampus, Cerebellar Cortex, Cerebellum) and Human Bone Marrow lysates after 0.3µg/ml antibody staining. Please note that currently we cannot find an explanation in the literature for the band we observe given the calculated size of 58.6kDa according to NP_060894.2. The 48kDa band was successfully blocked by incubation with the immunizing peptide.
Application Type	Pep-ELISA, IHC

DOCUMENTS

- [Data Sheet](#)

GALLERY IMAGES

