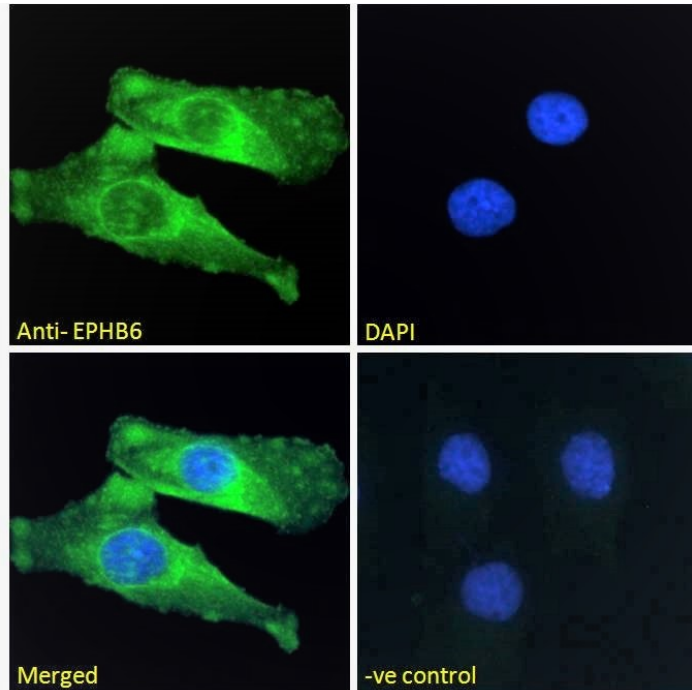




GOAT ANTI-EPHB6 ANTIBODY

SKU: EB09557



SPECIFICATIONS

Formulation Supplied at 0.5 mg/ml in Tris saline, 0.02% sodium azide, pH7.3 with 0.5% bovine serum albumin.

Unit Size 100 µg

Storage Instructions Aliquot and store at -20°C. Minimize freezing and thawing.

Synonym /

Alias Names ephrin receptor EphB6|MGC129911|MGC129910|HEP|EPH receptor B6|EPHB6

Usage Summary **Immunofluorescence:** Strong expression of the protein seen in the membranes and cytoplasm of HeLa and U2OS cells. Recommended concentration: 10µg/ml. **Flow Cytometry:** Flow cytometric analysis of HeLa cells. Recommended concentration: 10ug/ml.

Accession ID NP_004436.2; NP_001267723.2

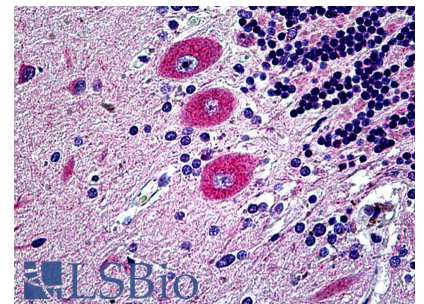
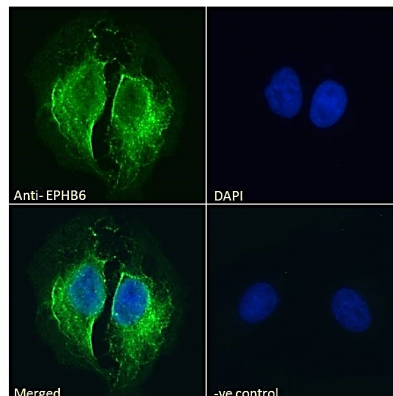
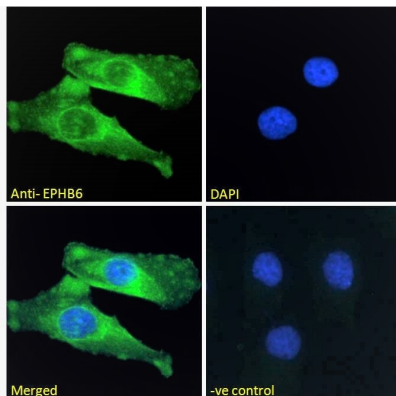
Blocking Peptide EBP09557

Immunogen Peptide with sequence C-EVIAHGKHTTSSD, from the internal region of the protein sequence according to NP_004436.2; NP_001267723.2.



| | |
|------------------------------|---|
| Peptide Sequence | C-EVIAHGKHTTSSD |
| Purification Method | Purified from goat serum by ammonium sulphate precipitation followed by antigen affinity chromatography using the immunizing peptide. |
| Shipping Instructions | Refrigerated |
| Predicted Species | Human, Mouse, Rat, Dog |
| Reactive Species | Human |
| Human Gene ID | 2051 |
| Mouse Gene ID | 13848 |
| Rat Gene ID | 312275 |
| Product Grade | https://prod-vector-labs-pimcore-assets.s3.us-east-1.amazonaws.com/assets/products/image/elite_plus_medium.png |
| IHC Results | Paraffin embedded Human Small Intestine and Brain (Cerebellum). Recommended concentration: 3.75µg/ml. |
| ELISA Detection Limit | Antibody detection limit dilution 1:32000. |
| Western Blot | Preliminary testing showed a band at approx 80kDa in U251 cell lysate and approx.75kDa in Human Pancreas lysate after 1-2µg/ml antibody staining (calculated MW of 79.8kDa according to NP_001267723.2). Primary incubation 1 hour at room temperature. |
| Application Type | Pep-ELISA, IF, IHC, FC |

GALLERY IMAGES





www.everestbiotech.com

Email: customerservice@vectorlabs.com

Telephone: [\(650\) 697-3600](tel:(650)697-3600)

