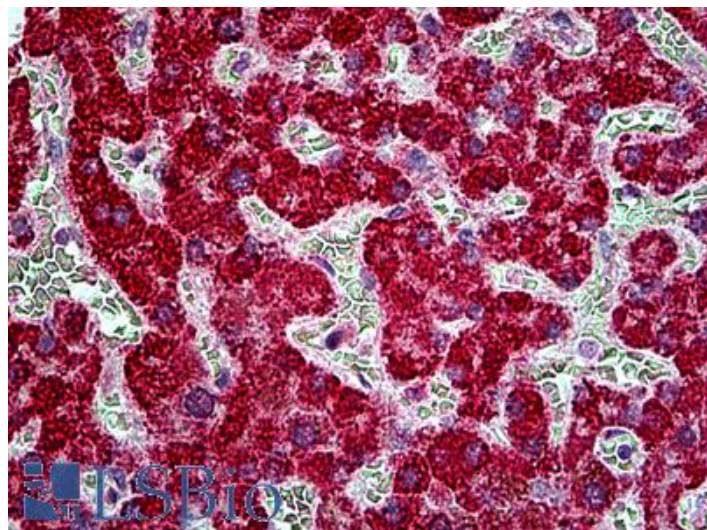


GOAT ANTI-EPI64/TBC1D10A ANTIBODY

SKU: EB06192



SPECIFICATIONS

Formulation Supplied at 0.5 mg/ml in Tris saline, 0.02% sodium azide, pH7.3 with 0.5% bovine serum albumin.

Unit Size 100 µg

Storage Instructions Aliquot and store at -20°C. Minimize freezing and thawing.

Synonym / Alias Names TBC1 domain family member 10A|TBC1D10|TBC1 domain family member 10A|Dj130h16|EPI 64|Rab27A-GAP-alpha|EBP50-PDZ interactor of 64 kD|EPI64

Usage Summary **Immunofluorescence:** Strong expression of the protein seen in the cytoplasm/ plasma membranes and nuclei of MCF7 cells. Recommended concentration: 10µg/ml. **Flow Cytometry:** Flow cytometric analysis of HEK293 cells. Recommended concentration: 10ug/ml.

Accession ID NP_114143; NP_001191169.1

Blocking Peptide EBP06192

Immunogen Peptide with sequence AKSNGENGPRAPA-C, from the N Terminus of the protein sequence according to NP_114143; NP_001191169.1.

Peptide Sequence AKSNGENGPRAPA-C

Purification Method Purified from goat serum by ammonium sulphate precipitation followed by antigen affinity chromatography using the immunizing peptide.

| | |
|------------------------------|---|
| Shipping Instructions | Refrigerated |
| Predicted Species | Human |
| Reactive Species | Human |
| Human Gene ID | 83874 |
| Product Grade | https://prod-vector-labs-pimcore-assets.s3.us-east-1.amazonaws.com/assets/products/image/elite_medium.png |
| ELISA Detection Limit | Antibody detection limit dilution 1:2000. |
| Application Type | Pep-ELISA, IF, FC |

DOCUMENTS

- [Data Sheet](#)

GALLERY IMAGES

