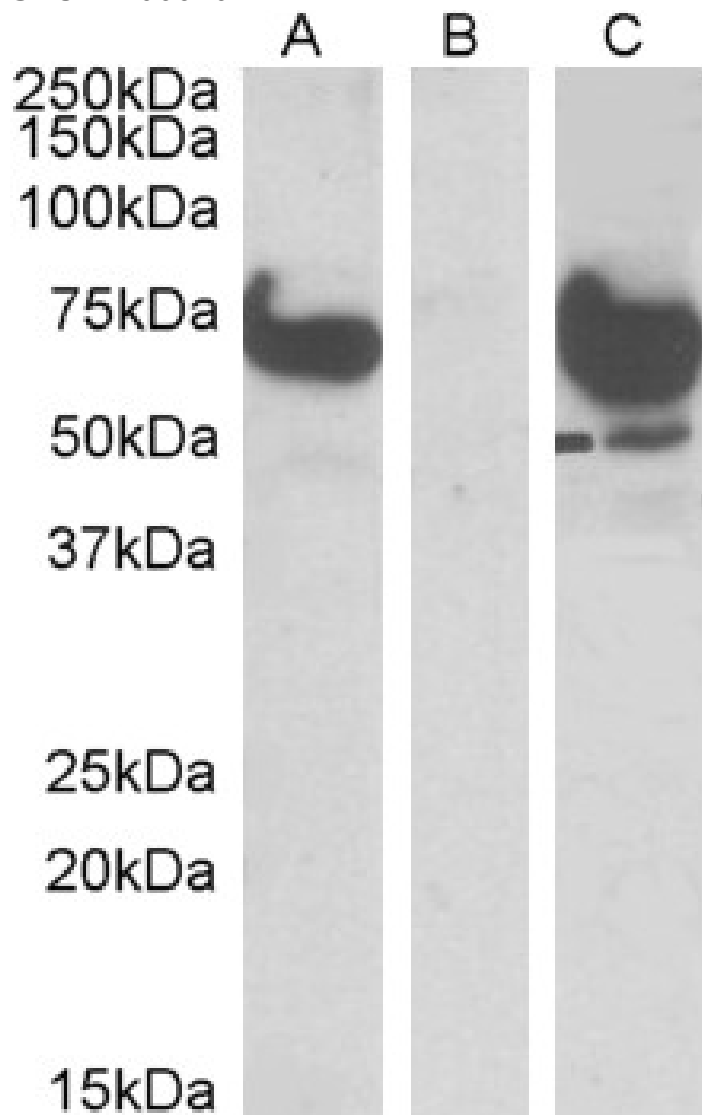


GOAT ANTI-EPM2A (LAFORIN) IP1 ANTIBODY

SKU: EB06610



SPECIFICATIONS

Formulation Supplied at 0.5 mg/ml in Tris saline, 0.02% sodium azide, pH7.3 with 0.5% bovine serum albumin.

Unit Size 100 µg

Storage Instructions	Aliquot and store at -20°C. Minimize freezing and thawing.
Synonym / Alias Names	EPM2AIP1 FLJ11207 KIAA0766 EPM2A (laforin) interacting protein 1 laforin interacting protein 1 EPM2A interacting protein 1
Accession ID	NP_055620.1
Blocking Peptide	EBP06610
Immunogen	Peptide with sequence WMTPKRSKMEVDC, from the N Terminus of the protein sequence according to NP_055620.1.
Peptide Sequence	WMTPKRSKMEVDC
Purification Method	Purified from goat serum by ammonium sulphate precipitation followed by antigen affinity chromatography using the immunizing peptide.
Shipping Instructions	Refrigerated
Predicted Species	Human, Mouse, Rat, Dog, Cow
Reactive Species	Human
Human Gene ID	9852
Product Grade	https://prod-vector-labs-pimcore-assets.s3.us-east-1.amazonaws.com/assets/products/image/elite_medium.png
ELISA Detection Limit	Antibody detection limit dilution 1:16000.
Western Blot	In transfected HEK293 transiently expressing full-length Human EPM2AIP1 (myc and DYKDDDDK tagged), a band of approx. 75kDa was observed. No bands were observed in mock-transfected HEK293 and the same band was observed using anti- DYKDDDDK tag antibody. Recommended concentration, 1-2µg/ml.
Application Type	Pep-ELISA, WB-Trf

DOCUMENTS

- [Data Sheet](#)

GALLERY IMAGES

