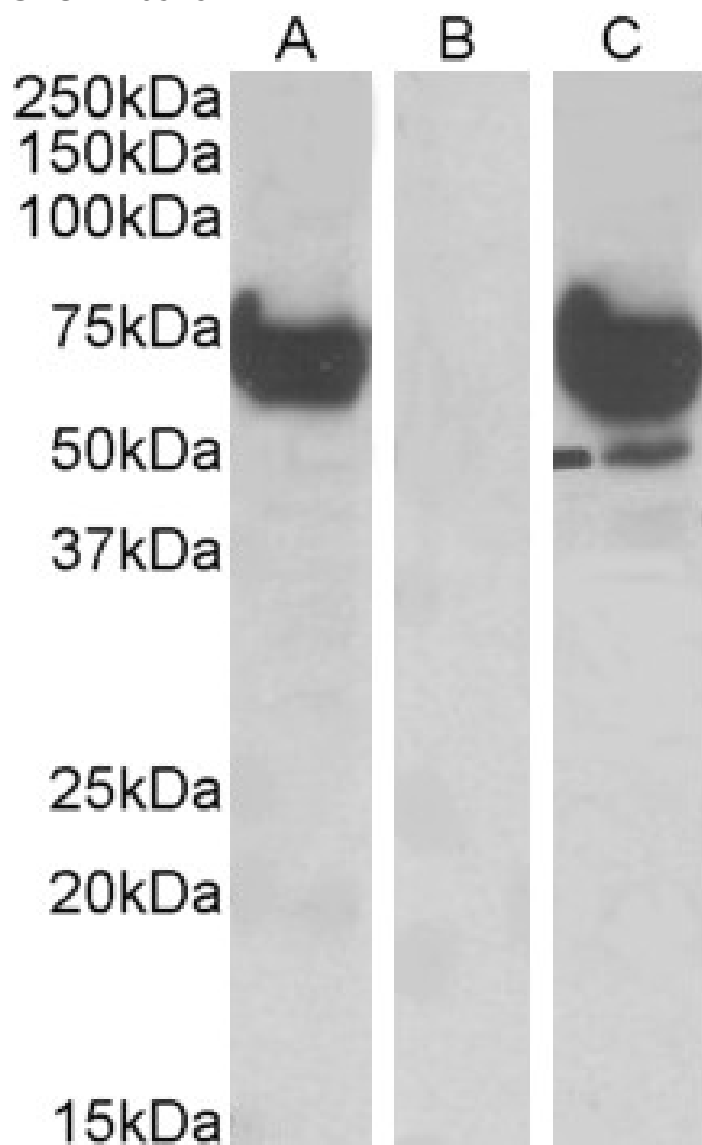


## GOAT ANTI-EPM2AIP1 ANTIBODY

**SKU:** EB09492



---

## SPECIFICATIONS

**Formulation** Supplied at 0.5 mg/ml in Tris saline, 0.02% sodium azide, pH7.3 with 0.5% bovine serum albumin.

**Unit Size** 100 µg

<b>Storage Instructions</b>	Aliquot and store at -20°C. Minimize freezing and thawing.
<b>Synonym / Alias Names</b>	EPM2A interacting protein 1 KIAA0766 FLJ11207 EPM2A (laforin) interacting protein 1 EPM2AIP1
<b>Usage Summary</b>	Purchase the +ve control! The transfected lysate used to QC this product is available for sale. Please email <a href="mailto:sales@everestbiotech.com">sales@everestbiotech.com</a> to request datasheet, pricing and delivery information.
<b>Accession ID</b>	NP_055620.1
<b>Blocking Peptide</b>	EBP09492
<b>Immunogen</b>	Peptide with sequence C-TRNQHTLSQPLTDEH, from the internal region (near C Terminus) of the protein sequence according to NP_055620.1.
<b>Peptide Sequence</b>	C-TRNQHTLSQPLTDEH
<b>Purification Method</b>	Purified from goat serum by ammonium sulphate precipitation followed by antigen affinity chromatography using the immunizing peptide.
<b>Shipping Instructions</b>	Refrigerated
<b>Predicted Species</b>	Human, Mouse, Rat, Dog
<b>Reactive Species</b>	Human
<b>Human Gene ID</b>	9852
<b>Product Grade</b>	<a href="https://prod-vector-labs-pimcore-assets.s3.us-east-1.amazonaws.com/assets/products/image/elite_medium.png">https://prod-vector-labs-pimcore-assets.s3.us-east-1.amazonaws.com/assets/products/image/elite_medium.png</a>
<b>IHC Results</b>	In paraffin embedded Human Heart shows regular staining of sarcoplasmic reticulum in the cardiac fibers. Recommended concentration, 5-10µg/ml.
<b>ELISA Detection Limit</b>	Antibody detection limit dilution 1:8000.
<b>Western Blot</b>	In transfected HEK293 transiently expressing full-length Human EPM2AIP1 (myc and DYKDDDDK tagged), a band of approx. 70kDa was observed. No bands were observed in mock-transfected HEK293 and the same band was observed using anti-DYKDDDDK tag antibody. Recommended concentration, 1-2µg/ml.
<b>Application Type</b>	Pep-ELISA, WB-Trf, IHC

## DOCUMENTS

- [Data Sheet](#)

## GALLERY IMAGES

