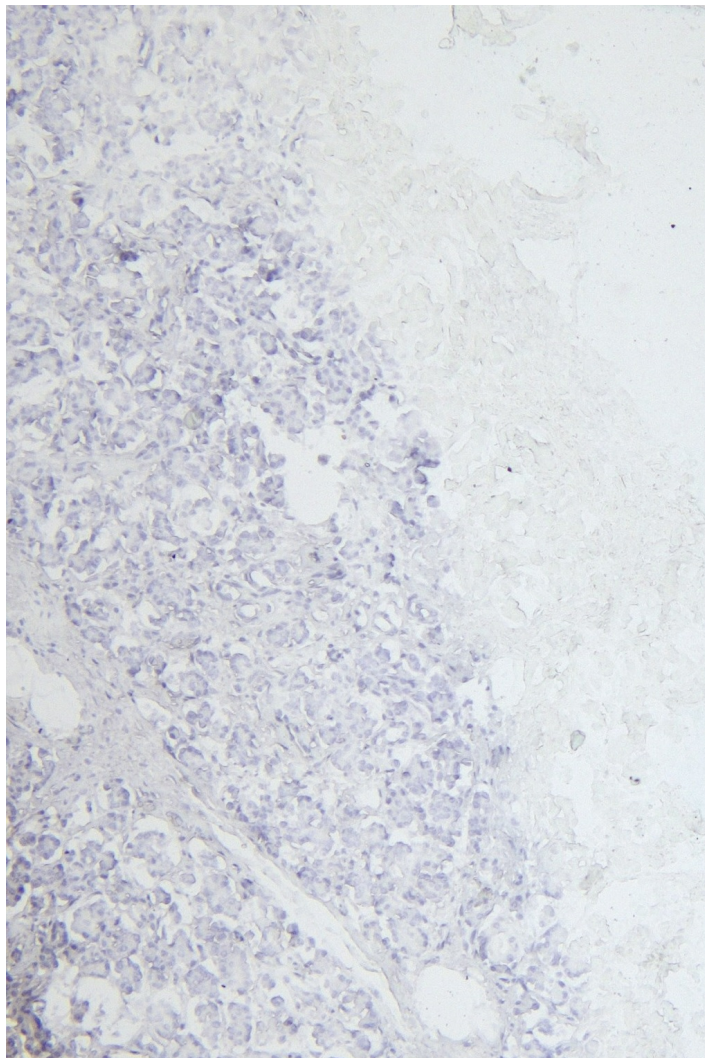


GOAT ANTI-EPS8 ANTIBODY

SKU: EB06081



SPECIFICATIONS

Formulation Supplied at 0.5 mg/ml in Tris saline, 0.02% sodium azide, pH7.3 with 0.5% bovine serum albumin.

Unit Size 100 µg

Storage Instructions Aliquot and store at -20°C. Minimize freezing and thawing.

Synonym /

Alias epidermal growth factor receptor pathway substrate 8|EPS8

Names

Accession ID NP_004438.3

Blocking Peptide EBP06081

Immunogen Peptide with sequence C-SGVESFDEGSSH, from the C Terminus of the protein sequence according to NP_004438.3.

Peptide Sequence C-SGVESFDEGSSH

Purification Method Purified from goat serum by ammonium sulphate precipitation followed by antigen affinity chromatography using the immunizing peptide.

Shipping Instructions Refrigerated

Predicted Species Human, Mouse, Rat, Dog, Pig

Reactive Species Human, Mouse

Human Gene ID 2059

Mouse Gene ID 13860

Product Grade https://prod-vector-labs-pimcore-assets.s3.us-east-1.amazonaws.com/assets/products/image/elite_medium.png

IHC Results Paraffin embedded Human Kidney and Pancreas. Recommended concentration: 6-8µg/ml.

ELISA

Detection Limit Antibody detection limit dilution 1:8000.

Western Blot Approx. 100kDa band observed in lysates of cell line NIH3T3 (calculated MW of 91.9kDa according to NP_004438.3). Recommended concentration: 1-3µg/ml. An additional band of unknown identity was also consistently observed at 70kDa. This band was successfully blocked by incubation with the immunizing peptide. Primary incubation was 1 hour.

Application Type Pep-ELISA, WB, IHC

DOCUMENTS

- [Data Sheet](#)

GALLERY IMAGES

