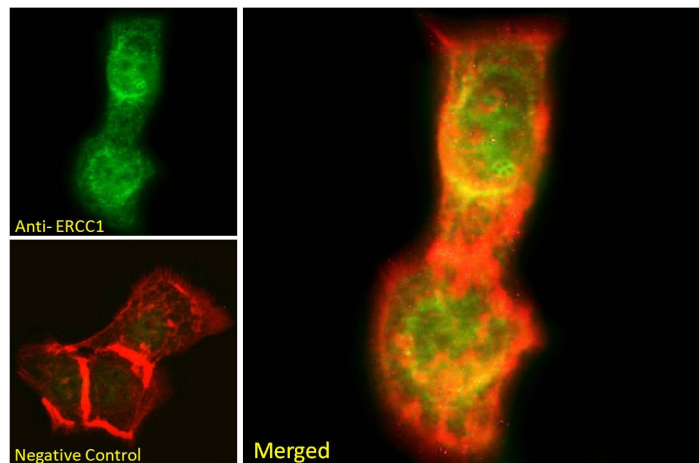


GOAT ANTI-ERCC1 ANTIBODY

SKU: EB08191



SPECIFICATIONS

Formulation Supplied at 0.5 mg/ml in Tris saline, 0.02% sodium azide, pH7.3 with 0.5% bovine serum albumin.

Unit Size 100 µg

Storage Instructions Aliquot and store at -20°C. Minimize freezing and thawing.

Synonym / Alias excision repair protein|excision repair cross-complementing 1|UV20|COFS4|excision repair cross-complementing rodent repair deficiency, complementation group 1 (includes overlapping antisense sequence)|ERCC1

Usage Summary Immunofluorescence: Strong expression of the protein seen in the nuclei of A431 and U2OS cells. Recommended concentration: 10µg/ml.

Accession ID NP_973730.1; NP_001974.1; NP_001159521.1

Blocking Peptide EBP08191

Immunogen Peptide with sequence C-QVDVKDPQQALKE, from the internal region of the protein sequence according to NP_973730.1; NP_001974.1; NP_001159521.1.

Peptide Sequence C-QVDVKDPQQALKE

Purification Method Purified from goat serum by ammonium sulphate precipitation followed by antigen affinity chromatography using the immunizing peptide.

Shipping Instructions Refrigerated

Predicted Species	Human, Mouse, Rat, Dog, Cow
Reactive Species	Human
Human Gene ID	2067
Product Grade	https://prod-vector-labs-pimcore-assets.s3.us-east-1.amazonaws.com/assets/products/image/elite_medium.png
ELISA	
Detection Limit	Antibody detection limit dilution 1:4000.
Application Type	Pep-ELISA, IF

DOCUMENTS

- [Data Sheet](#)

GALLERY IMAGES

