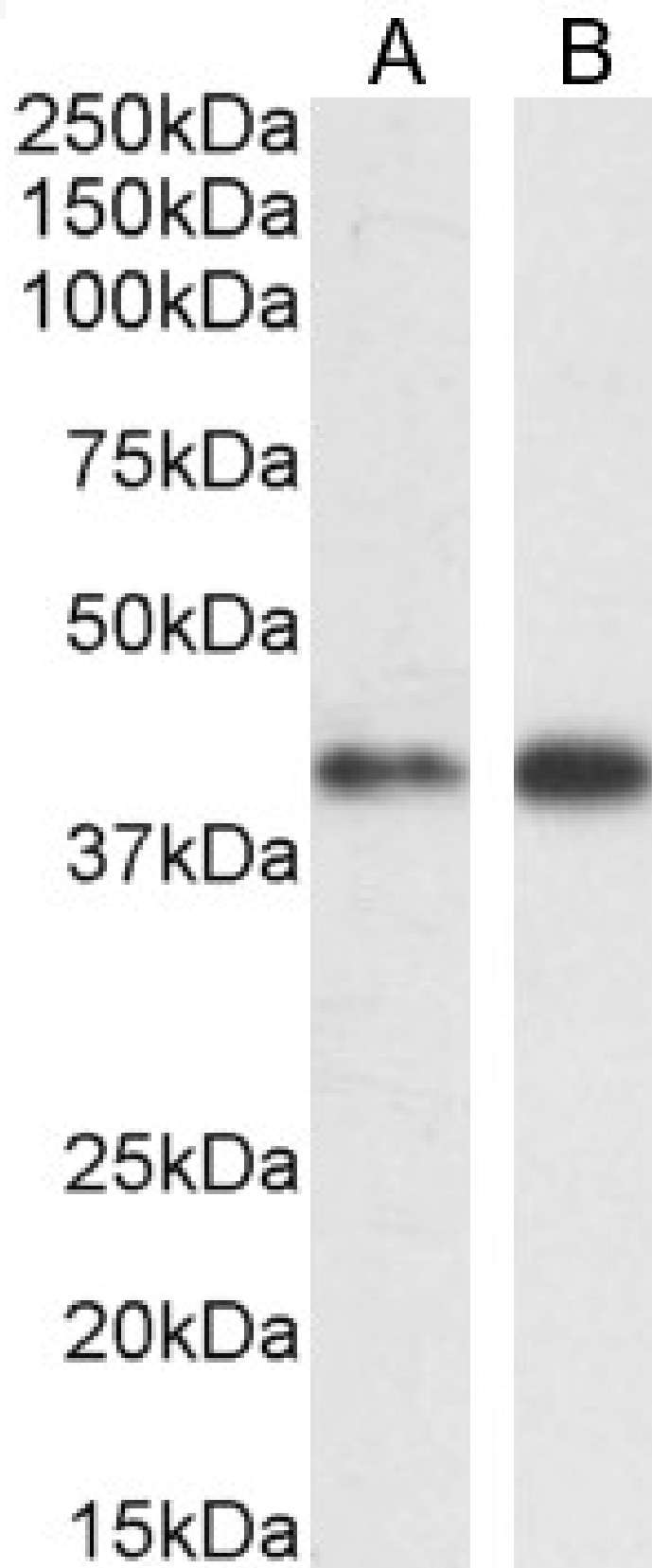


GOAT ANTI-MAPK3/ERK1 ANTIBODY

SKU: EB06751



SPECIFICATIONS

Formulation	Supplied at 0.5 mg/ml in Tris saline, 0.02% sodium azide, pH7.3 with 0.5% bovine serum albumin.
Unit Size	100 µg
Storage Instructions	Aliquot and store at -20°C. Minimize freezing and thawing.
Synonym / Alias	extracellular signal-related kinase 1 extracellular signal-regulated kinase 1 OTTHUMP00000174538 MGC20180 HUMKER1A HS44KDAP protein kinase, mitogen-activated 3 (MAP kinase 3 p44) PRKM3 P44MAPK P44ERK1 HGNC:6877 mitogen-activated protein kinase 3 ERK1 MAPK3
Usage Summary	Immunofluorescence: Strong expression of the protein seen in the cytoplasm of HeLa and A431 cells. Recommended concentration: 10µg/ml. Flow Cytometry: Flow cytometric analysis of A431 cells. Recommended concentration: 10ug/ml.
Accession ID	NP_002737.2; NP_001035145.1; NP_001103361.1
Blocking Peptide	EBP06751
Immunogen	Peptide with sequence GGEPRRTEGVGP-C, from the N Terminus of the protein sequence according to NP_002737.2; NP_001035145.1; NP_001103361.1.
Product Comments	No cross-reactivity expected with ERK2
Peptide Sequence	GGEPRRTEGVGP-C
Purification Method	Purified from goat serum by ammonium sulphate precipitation followed by antigen affinity chromatography using the immunizing peptide.
Shipping Instructions	Refrigerated
Predicted Species	Human
Reactive Species	Human
Human Gene ID	5595
Product Grade	https://prod-vector-labs-pimcore-assets.s3.us-east-1.amazonaws.com/assets/products/image/elite_plus_medium.png
ELISA Detection Limit	Antibody detection limit dilution 1:4000.
Western Blot	Approx 40kDa band observed in Human Cerebellum lysates and in lysates of cell lines A431 and HepG2, and approx 42kDa observed in Human Frontal Cortex lysates (calculated MW of 40.1kDa according to NP_001035145.1 and 43.1kDa according to NP_002737.2). Recommended concentration: 0.1-1µg/ml. Primary incubation 1 hour at room temperature.
Application Type	Pep-ELISA, WB, IF, FC

DOCUMENTS

- [Data Sheet](#)

GALLERY IMAGES

