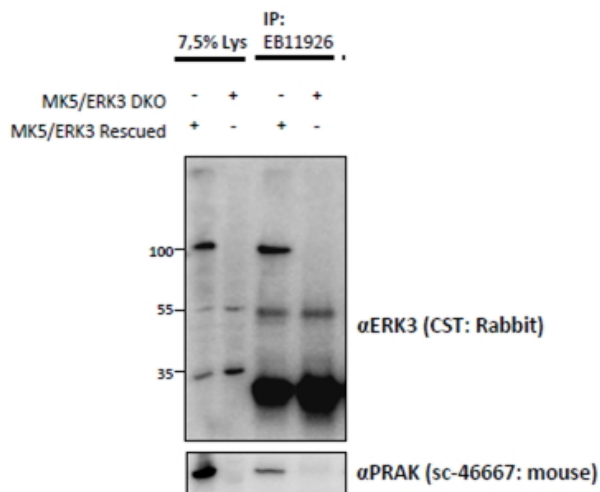


GOAT ANTI-ERK3 / MAPK6 ANTIBODY

SKU: EB11926



SPECIFICATIONS

Formulation Supplied at 0.5 mg/ml in Tris saline, 0.02% sodium azide, pH7.3 with 0.5% bovine serum albumin.

Unit Size 100 μ g

Storage Instructions Aliquot and store at -20°C. Minimize freezing and thawing.

Synonym / Alias Names protein kinase, mitogen-activated 6|protein kinase, mitogen-activated 5|p97-MAPK|extracellular signal-regulated kinase, p97|extracellular signal-regulated kinase 3|MAPK 6|MAP kinase isoform p97|MAP kinase 6|ERK-3|p97MAPK|PRKM6|HsT17250|ERK3|mitogen-activated protein kinase 6|MAPK6

Usage Summary **Immunoprecipitation:** MK5/ERK3 double knockout Mouse Embryonic Fibroblasts (MEFs) retrovirally transduced with MK5/ERK3 or empty vector (GFP) were lysed from confluent plates and used for IP with 1.5 μ g EB11926. Western blots of the IP were labelled with rabbit anti-ERK3 serum (CST) or with mouse anti-MK5 (SC). An approx 100kDa of ERK3 is only precipitated from lysates of those KO MEFs that have been rescued by the ERK3/MK5 expression construct as described in as described in PMID: 22508986. Data obtained from Dr. M. B. Menon, Inst. Biochemistry, Hannover Medical School, Germany.

Accession ID NP_002739.1

Blocking Peptide EBP11926

Immunogen Peptide with sequence C-HSPVGSPLKSIQ, from the internal region (near C Terminus) of the protein sequence according to NP_002739.1.

Product Comments Reported variants represent identical protein (NP_056621.4; NP_081694.1).

Peptide Sequence	C-HSPVGSPLKSIQ
Purification Method	Purified from goat serum by ammonium sulphate precipitation followed by antigen affinity chromatography using the immunizing peptide.
Shipping Instructions	Refrigerated
Predicted Species	Human, Mouse, Rat, Dog, Pig, Cow
Reactive Species	Human, Mouse
Human Gene ID	5597
Mouse Gene ID	50772
Rat Gene ID	58840
Product Grade	https://prod-vector-labs-pimcore-assets.s3.us-east-1.amazonaws.com/assets/products/image/elite_plus_medium.png
IHC Results	Paraffin embedded Human Heart. Recommended concentration: 10µg/ml.
ELISA Detection Limit	Antibody detection limit dilution 1:128000.
Western Blot	In transfected HEK293 transiently expressing Mouse ERK3 / Mapk6 fused to GFP the band with expected size is intensified when co-expressed with MK5 as the stabilizer for ERK3. No bands are observed in transfected HEK293 with empty vector and the same band is observed using anti-GFP antibody. Data obtained from Dr. M. B. Menon, Inst. Biochemistry, Hannover Medical School, Germany. Recommended concentration, 0.5-1µg/ml.
Application Type	Pep-ELISA, WB-Trf, IHC, IP

DOCUMENTS

- [Data Sheet](#)

GALLERY IMAGES

