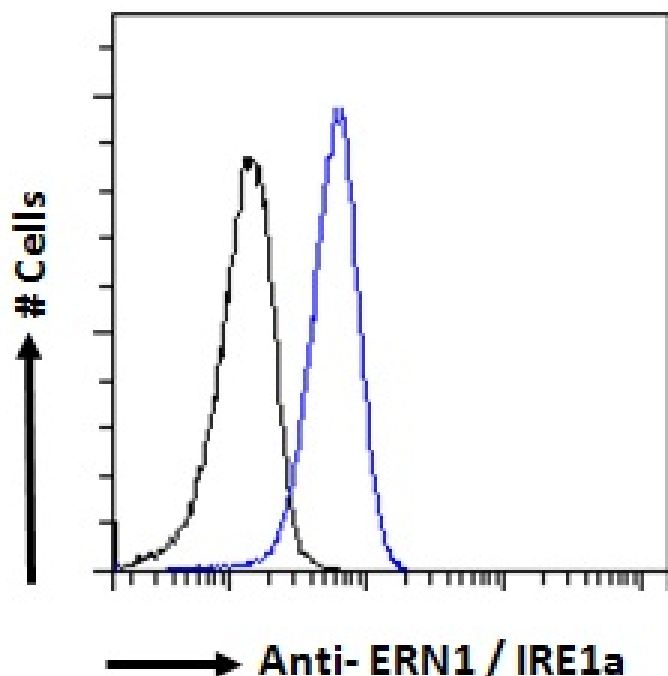


GOAT ANTI-ERN1 / IRE1A ANTIBODY

SKU: EB08559



SPECIFICATIONS

Formulation Supplied at 0.5 mg/ml in Tris saline, 0.02% sodium azide, pH7.3 with 0.5% bovine serum albumin.

Unit Size 100 µg

Storage Instructions Aliquot and store at -20°C. Minimize freezing and thawing.

Synonym / Alias Names IRE1a, IRE1-alpha|protein kinase|endoribonuclease|inositol-requiring 1|endoplasmic reticulum to nucleus signalling 1|ER to nucleus signalling 1|MGC163279|MGC163277|IRE1P|FLJ30999|endoplasmic reticulum to nucleus signaling 1|IRE1|ERN1

Usage Summary Flow Cytometry: Flow cytometric analysis of HeLa cells. Recommended concentration: 10ug/ml.

Accession ID NP_001424.3

Blocking Peptide EBP08559

Immunogen Peptide with sequence C-PNAHGKIKAMISD, from the internal region of the protein sequence according to NP_001424.3.

Peptide Sequence	C-PNAHGKIKAMISD
Purification Method	Purified from goat serum by ammonium sulphate precipitation followed by antigen affinity chromatography using the immunizing peptide.
Shipping Instructions	Refrigerated
Predicted Species	Human, Mouse, Rat, Dog, Pig, Cow
Reactive Species	Human
Human Gene ID	2081
Mouse Gene ID	78943
Rat Gene ID	498013
Product Grade	https://prod-vector-labs-pimcore-assets.s3.us-east-1.amazonaws.com/assets/products/image/elite_medium.png
ELISA Detection Limit	Antibody detection limit dilution 1:16000.
Western Blot	Approx 110kDa band observed in Human Pancreas and Duodenum lysates (calculated MW of 110kDa according to NP_001424.3). Recommended concentration: 0.1-0.3µg/ml. Primary incubation 1 hour at room temperature.
Application Type	Pep-ELISA, WB, FC

DOCUMENTS

- [Data Sheet](#)

GALLERY IMAGES

