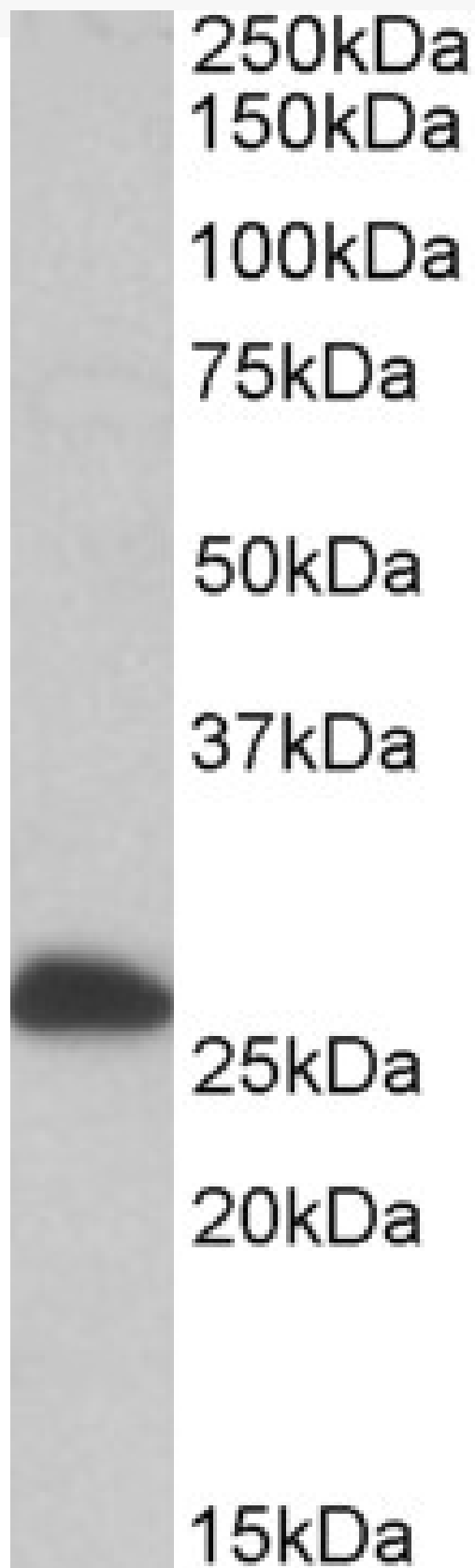


GOAT ANTI-ETFB / FP585 (AA 152-165) ANTIBODY

SKU: EB10171



SPECIFICATIONS

Formulation	Supplied at 0.5 mg/ml in Tris saline, 0.02% sodium azide, pH7.3 with 0.5% bovine serum albumin.
Unit Size	100 µg
Storage Instructions	Aliquot and store at -20°C. Minimize freezing and thawing.
Synonym / Alias Names	ETFB MADD FP585 electron-transferring-flavoprotein, beta polyp electron-transfer-flavoprotein, beta polypeptide electron transfer flavoprotein, beta polypeptide electron transfer flavoprotein beta-subunit electron transfer flavoprotein beta subunit
Accession ID	NP_001976.1; NP_001014763.1
Blocking Peptide	EBP10171
Immunogen	Peptide with sequence C-QVTLEGDKLKVERE, from the internal region of the protein sequence according to NP_001976.1; NP_001014763.1.
Product Comments	This antibody is expected to recognize both reported isoforms (NP_001976.1; NP_001014763.1). Amino acid numbering in the name above refers to NP_001976.1).
Peptide Sequence	C-QVTLEGDKLKVERE
Purification Method	Purified from goat serum by ammonium sulphate precipitation followed by antigen affinity chromatography using the immunizing peptide.
Shipping Instructions	Refrigerated
Predicted Species	Human, Mouse, Rat, Dog, Cow
Reactive Species	Human, Mouse, Rat
Human Gene ID	2109
Mouse Gene ID	110826
Rat Gene ID	292845
Product Grade	https://prod-vector-labs-pimcore-assets.s3.us-east-1.amazonaws.com/assets/products/image/elite_medium.png
IHC Results	In paraffin embedded Human Liver shows mitochondrial staining in hepatocytes. Recommended concentration, 3-5µg/ml.
ELISA Detection Limit	Antibody detection limit dilution 1:8000.
Western Blot	Approx 27kDa band observed in Human, Mouse and Rat Liver lysates (calculated MW of 27.8kDa according to NP_001976.1). Recommended concentration: 1-3µg/ml.
Application Type	Pep-ELISA, WB, IHC

DOCUMENTS

- [Data Sheet](#)

GALLERY IMAGES

