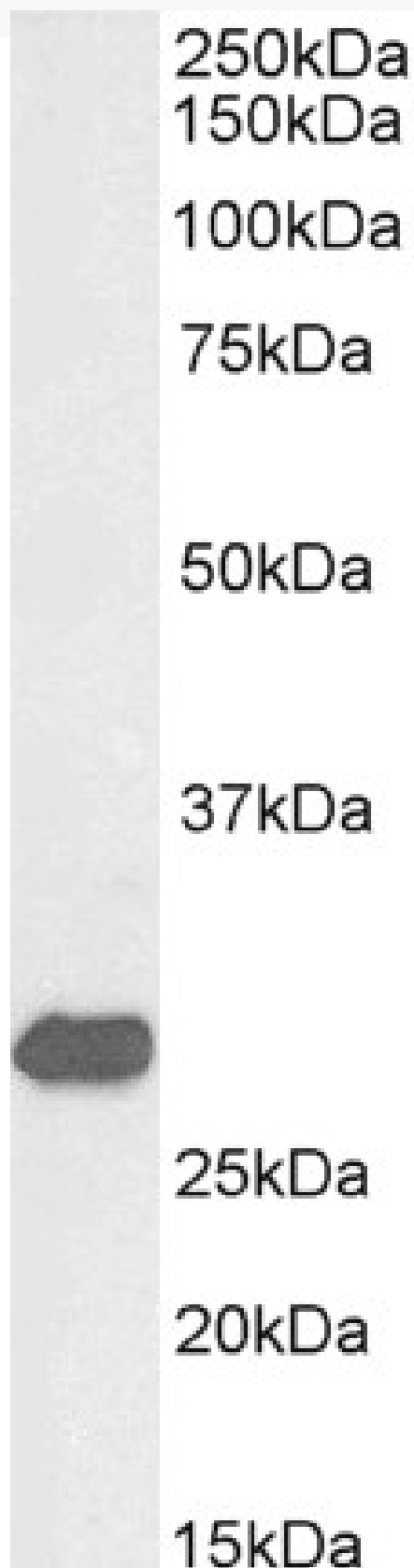


GOAT ANTI-ETFB (AA 231-243), BIOTINYLATED ANTIBODY

SKU: EB10172-B



SPECIFICATIONS

Formulation Supplied at 0.5 mg/ml in Tris saline, 0.02% sodium azide, pH7.3 with 0.5% bovine serum albumin.

Unit Size 100 µg

Storage Instructions Aliquot and store at -20°C. Minimize freezing and thawing.

Synonym / Alias Names ETFB|MADD|FP585|electron-transferring-flavoprotein, beta polypeptide|electron-transfer-flavoprotein, beta polypeptide|electron transfer flavoprotein, beta polypeptide|electron transfer flavoprotein beta-subunit|electron transfer flavoprotein beta subunit

Accession ID NP_001976.1; NP_001014763.1

Blocking Peptide EBP10172-B

Immunogen Peptide with sequence C-PQRTAGVKVETTE., from the C Terminus of the protein sequence according to NP_001976.1; NP_001014763.1.

Product Comments This antibody is expected to recognize both reported isoforms (NP_001976.1; NP_001014763.1).

Peptide Sequence C-PQRTAGVKVETTE.

Purification Method Purified from goat serum by ammonium sulphate precipitation followed by antigen affinity chromatography using the immunizing peptide.

Shipping Instructions Refrigerated

Predicted Species Human, Mouse, Rat, Dog, Cow

Reactive Species Human, Mouse, Rat

Human Gene ID 2109

Mouse Gene ID 110826

Rat Gene ID 292845

Product Grade https://prod-vector-labs-pimcore-assets.s3.us-east-1.amazonaws.com/assets/products/image/elite_medium.png

ELISA Detection Limit Antibody detection limit dilution 1:8000.

Western Blot Approx 27kDa band observed in Mouse Liver lysates (calculated MW of 27.6kDa according to Mouse NP_080971.2). See non-biotinylated parental product's datasheet for further QC data. Recommended concentration: 0.03-0.1µg/ml.

Application Type Pep-ELISA, WB

DOCUMENTS

- [Data Sheet](#)

GALLERY IMAGES

